



INDIAN NOTICES TO MARINERS



EDITION NO. 08 DATED 16 APR 2018

(CONTAINS NOTICES 079 TO 085)

REACH US 24 x 7



in的角度@navy.gov.in
msis-inho@navy.gov.in



+91-135-2748373



National Hydrographic Office
107-A, Rajpur Road
Dehradun – 248001
INDIA



Joint Director of Hydrography
Maritime Safety Information Services
+91- 135 - 2746290-117

www.hydrobharat.gov.in

CONTENTS

Section No.	Title
I	List of Charts Affected
II	Permanent Notices
III	Temporary and Preliminary Notices
IV	Marine Information
V	NAVAREA VIII Warnings in force
VI	Corrections to Sailing Directions
VII	Corrections to List of Lights
VIII	Corrections to List of Radio Signals
IX	Reporting of Navigational Dangers

(PUBLISHED ON NHO WEBSITE ON 1ST & 16TH OF EVERY MONTH)

FEEDBACK: msis-inho@navy.gov.in



INSIST ON INDIAN CHARTS AND
PUBLICATIONS
Original, Authentic and Up-to-Date



© Govt. of India Copyright

No permission is required to make copies of these Notices. However, such copies are not to be commercially sold.

II

MARINER'S OBLIGATION AND A CHART MAKER'S PLEA

Observing changes at sea proactively and reporting them promptly to the concerned charting agency, is an obligation that all mariners owe to the entire maritime community towards SOLAS. Mariners are requested to notify the Chief Hydrographer to the Government of India at the above mentioned address/fax number/ E mail address immediately on discovering new or suspected dangers to navigation, changes/defects pertaining to navigational aids, and shortcomings in Indian charts/publications. The Hydrographic Note [Form IH – 102] is a convenient form to notify such changes. Specimen form is attached at Section IX with this notice. Also visit our website for downloading and filling up instructions for Hydrographic Note.

**Chief Hydrographer
to the Government of India**

WARNING AGAINST USE OF COUNTERFEIT PRODUCTS

All mariners are cautioned against the use of counterfeit copies of IN Charts and publications. Navigational Charts produced after 31 Oct 14 carry NHO crest as watermark on the reverse with backslip. Chart Agent's stamp is mandatory on all Charts.

Counterfeit products may have errors resulting in potential risks. The same are not approved by inspecting agencies and do not satisfy the carriage requirements of SOLAS chapter V.

Mariners are strongly advised not to use or encourage the use of counterfeit charts and publications. Failure to comply with the warning may invite legal action.

III

EXPLANATORY NOTES

Corrections to Charts and Publications. Section I comprises List of Charts affected by the notices contained in this edition. Whereas sections II and III contain information for correcting the charts and publications. Mariners should insist on corrected charts from their chart distributors/agents.

- (a) Geographical positions given are in the horizontal datum of the current edition of the chart, unless otherwise stated.
- (b) Bearings are true, reckoned clockwise from 000° to 359°. Bearings to lights are from seaward.
- (c) Symbols referred to, are those shown on the chart 5020 (INT 1).
- (d) Alterations to depth contours, deletion of depths to make way for new detail, etc; are not normally mentioned, unless they have some navigational significance.
- (e) Blocks and notes, if any, accompanying the Notices in Sections II and III are placed after Section IX.

Temporary and Preliminary Notices. These are indicated by (T) and (P) respectively after the Notice number and are placed in Section III . SI Nos. of those in force are published quarterly on 01 Jan, 01 Apr, 01 Jul and 01 Oct, and their text is published in Annual Edition of Indian Notices to Mariners. They should be inserted in pencil, by the user, on receipt.

Source of Information. A star preceding the number of a Notice indicates that the notice is promulgated by INHO based on original information received.

Sailing Directions. Corrections for the Sailing Directions (Pilots) are given in Section VI.

Lights. Corrections to Indian List of Lights are given in Section VII, where affected Light List number is quoted.

- (a) These corrections should be incorporated as per instructions given on page XI of the List of Lights.
- (b) Such correction notices to list of lights may be published in either an earlier or a later Edition of N to M than the Edition containing the Notice to the chart correction.
- (c) The range of a light given is its nominal range. Its geographical range is given in parenthesis only if it is less than the nominal range.
- (d) A star indicates that the corresponding field is to be amended and all stars indicate that new light is to be inserted.

Radio Signals. The corrections in Section VIII should be cut and pasted in the appropriate volume of the List of Radio Signals.

Radio Navigational Warnings.

- (a) These are broadcast as serially numbered NAVAREA warnings by the concerned NAVAREA coordinator through GMDSS and Area Radio Broadcasts.
- (b) They contain important information affecting navigational safety, which cannot await the publication of the next edition of N to M.
- (c) It should be borne in mind that they may be based on reports which cannot always be verified before promulgation.
- (d) It is therefore necessary to be selective, and promulgate only the more important warnings to avoid over loading users; the less important information is included in the forthcoming edition of N to M or the Chart/publication concerned.

IV

Laws and Regulations. While in the interest of the safety of shipping, the Hydrographic Office makes every endeavor to include in its publications details of the laws and regulations of all countries pertaining to navigation, it must be clearly understood: -

- (a) That no liability whatsoever can be accepted for failure to publish details of any particular law or regulation and
- (b) That publication of details of a law or regulation is solely for the safety and convenience of shipping and implies no recognition of the International validity of the law or regulation.

Correction of Charts and Publications by the Users. Notices to Mariners contain important information concerning safety of navigation at sea, hence, they should be used to keep the specified charts and publications up-to-date.

Reliance on Charts and Associated Publications. While every effort is made by the Hydrographic Office to ensure the accuracy of the information on Charts and Publications before they are published, it should be appreciated that it may not always be complete and up-to-date. The mariner must be the final judge for the reliance he can place on the information available, bearing in mind his particular circumstances, local pilotage guidance and judicious use of available navigational aids.

Use of Global Positioning System (WGS 84) positions.

- (a) The positions of hydrographic objects shown on some of the Indian charts and publications are in Everest datum. However, the positions of vessels obtained from Global Positioning System (GPS) are on World Geodetic System 1984 datum. There will always exist a difference in the position values obtained by visual fixing (Everest Datum) and GPS position (WGS 84 datum).
- (b) Wherever these differences have been ascertained, their average values are published as a Cautionary Note on the chart concerned, as shifts in Latitude and Longitude. Whilst plotting GPS positions on charts, the shift values as given on the chart must be applied, before making any assessment of the navigational situation vis-à-vis the other charted information.
- (c) These datum shift values are not uniform, particularly in areas off Andaman and Nicobar and Lakshadweep Islands, as these places are not linked to mainland network (Everest datum). Mariners are advised to use alternate source of position information such as Visual or Radar, particularly when closing the shore or navigating in the vicinity of dangers.

Source Data on Charts. All Indian charts contain specific information on their source of hydrographic data. In areas where the source data is very old, incomplete and less reliable, the mariner must use such charts with prudence. Mariner should always use the largest scale charts available for the area. Apart from being the most detailed, the larger scale charts are usually corrected first. Hydrographic information may be sparse on small scale charts. On such charts, a charted shoal may be in error as regards position, least depth and extent. Uncharted dangers may also exist, particularly in areas away from well-established routes. Mariners must exercise due caution.

Further Guidance. The Mariner's Hand Book (NP 100) gives full explanation on the use of charts and the type of information contained on charts. In their own interest, all users of charts should refer to it.

NEWLY PUBLISHED INDIAN CHARTS, ENC_s AND PUBLICATION

1. The new edition Indian Electronic Navigational Charts that are available for mariners in the market are as follows:-

<i>ENC Cell Name</i>	<i>Chart No.</i>	<i>Title</i>	<i>Issue Date</i>
IN62106P	2106	MUNDRA PORT	09-04-2018

2. The Indian Electronic Navigational Charts that are permanently withdrawn are as follows:-

<i>ENC Cell Name</i>	<i>Chart No.</i>	<i>Title</i>	<i>Issue Date</i>
IN62106P	2106	MUNDRA PORT	10-02-2017

3. The forthcoming Indian Charts are as follows:-

<i>Chart No</i>	<i>Title</i>	<i>Scale</i>	<i>Remarks</i>
21	MUSCAT TO MUMBAI	15,00,000	New Edition
22(INT 752)	MUMBAI TO CAPE COMORIN	15,00,000	New Edition
210	UMARGAM TO SATPATI	1,50,000	New Edition
211	SATPATI TO DIGHI HARBOUR	1,50,000	New Edition
212	MURUD-JANJIRA HR TO RATNAGIRI	1,50,000	New Edition
220	TANUR NAGARAM TO MANAKKODAM	1,50,000	New Chart
221	ALLEPPEY TO QUILON	1,50,000	New Chart
253 (INT 7328)	VERAVAL TO PIPAVAV	3,00,000	New Edition
254 (INT 7331)	APPROACHES TO GULF OF KHAMBHAT	3,00,000	New Edition
255 (INT 7334)	APPROACHES TO MUMBAI	3,00,000	New Edition
256 (INT 7340)	MURUD-JANJIRA HR TO MALVAN	3,00,000	New Edition
292 (INT 7021)	DWARKA TO MUMBAI	7,50,000	New Edition
293 (INT 7022)	MUMBAI TO NEW MANGALORE	7,50,000	New Edition
351 (INT 7419)	PARADIP TO PUSSUR RIVER	3,00,000	New Chart
2016 (INT 7336)	INNER APPROACHES TO MUMBAI	60,000	New Edition
2043	APPROACHES TO VENGURLA AND REDI	60,000	New Chart
3006 (INT 7423)	HUGLI RIVER;		New Chart
	KUKRAHATI REACH TO ROYAPUR CROSSING	37,500	
	ROYAPUR CROSSING TO CALCUTTA DOCKS	37,500	
	CALCUTTA DOCKS	17,500	
3009 (INT 7407)	KAKINADA PORT	10,000	New Chart
	KAKINADA ANCHORAGE	25,000	
4107	INTERVIEW ISLAND	25000	New Chart

Availability of ENC's

The complete folios of Official Indian ENC's are distributed worldwide through JEPPESEN MARINE (formerly C-MAP), UKHO and Norwegian Hydrographic Service. UKHO distributes Indian ENC's through the world wide network of their agents and distributors. Updates are also made available as per the existing policy of the distributor. Mariners and other ENC users may contact the under mentioned for further details:

<p>United Kingdom Hydrographic Office Admiralty Way, Taunton, Somerset TA1 2DN, UK Tel: +44 (0) 1823 337900 Fax: +44 (0) 1823 330561, 1823 284077 Web site: www.hydro.gov.uk</p>	<p>C-MAP Norway AS Nyaskaiveien 2, 4379 Egersund, Norway Ph: +47 51 464700, +91 2262233326 Mob: +91 9820238542 Fax: +47 51 464701, +91 2267939504 Email: enc@c-map.com, info@c-map.co.no Website: www.c-map.com</p>
<p>M/s Primar Norwegian Hydrographic Service, Postbox 60, 4001 Stavanger Norway Telephone - +47 - 51 85 87 00 Fax - + 47 - 51 85 87 08 E-mail: data@ecc.no Website: - www.primar.org</p>	<p>M/s IIC Technologies Limited B-2-350/5/B-22, Road No. 3 Banjara Hills Hyderabad - 500 034 Telangana Tel:+91 4039144444 Fax: +91 4039144455 Email: somnath.marthi@iictechnologies.com Web: www.iictechnologies.com</p>



SECTION – I

The list of charts affected by the Notices 079 to 085 contained in this edition is as follows:

CHART NUMBER	FOLIO NO.	NOTICE NO.
21	2	085(P)
22 (INT 752)	3	085(P)
31 (INT 756)	5	083(T)
32 (INT 754)	5	083(T)
41 (INT 757)	6	084(T)
211	3	085(P)
223	4	081
255 (INT 7334)	3	085(P)
260 (INT 7362)	4	081
292 (INT 7021)	2	085(P)
293 (INT 7022)	3	085(P)
313	5	082
354 (INT 7408)	5	083(T)
356 (INT 7400)	5	082
391	5	083(T)
2001	3	080, 085(P)
2015 (INT 7337)	3	080, 085(P)
2016 (INT 7336)	3	080, 085(P)
2076 (INT 7338)	3	085(P)
2106	2	079
3001 (INT 7402)	5	082

SECTION – II**PERMANENT NOTICES***** 079(08/18) INDIA – WEST COAST – Gulf of Kachchh – Mundra Port – General Area.**

Source: Adani Ports and SEZ Ltd.

Chart 2106 (previous update 144/17)

Insert accompanying block showing amendments to general area; centered on: 22° 44′.01N., 69° 42′.42E.

***080(08/18) INDIA – WEST COAST –Mumbai Docks – Maintained depth.**

Source: IH-102, HSU Mumbai.

Chart 2016 (INT 7336) [previous update 075/18]

Replace “13.5m” with “8,0m”, centered on: 18° 56′.50N., 72° 51′.32E.
 legend “Maintained depth 13,5m” with
 “Maintained depth 8,0m”, centered on: 18° 55′.42N., 72° 51′.50E.

Chart 2015 (INT 7337) [previous update 100/17]

Replace legend “13.5m (see Note)” with
 “8,0m (see Note)”, centered on: 18° 56′.54N., 72° 51′.32E.
 legend “16.0m (see Note)” with
 “11,0m (see Note)”, centered on: 18° 56′.50N., 72° 51′.23E.
 legend “13.5m (see Note)” with
 “8,0m (see Note)”, centered on: 18° 55′.92N., 72° 51′.22E.
 legend “Maintained depth 13,5m (see Note)” with
 “Maintained depth 8,0m (see Note)”, centered on: 18° 55′.42N., 72° 51′.53E.

Chart 2001 [previous update 088/17]

Replace legend “Maintained depth 16,0m (see Note)” with
 “Maintained depth 11,0m (see Note)”, centered on: 18° 56′.48N., 72° 51′.23E.
 legend “Maintained depth 13,5m (see Note)” with
 “Maintained depth 8,0m (see Note)”, centered on: 18° 56′.45N., 72° 51′.32E.
 legend “13.5m (see Note)” with
 “8,0m (see Note)”, centered on: 18° 55′.90N., 72° 51′.22E.
 legend “Maintained depth 13,5m (see Note)” with
 “Maintained depth 8,0m (see Note)”, centered on: 18° 55′.41N., 72° 51′.56E.

***081(08/18) INDIA - SOUTH COAST – Kolachel to Manappad - Depth.**

Source: NHO, Dehradun

Chart 260 (INT 7362) [previous update 163/16]

Insert depth 19₉ enclosed by 20m contour 08° 12′.96N., 77° 08′.47E.

Chart 223 [previous update 034/18]

Insert depth 19₉ enclosed by 20m contour 08° 12′.96N., 77° 08′.47E.

***082(08/18) INDIA – EAST COAST – Kamarajar Port– Buoy.**

Source: NHO Dehradun.

Chart 356 (INT 7400) [previous update 037/17]

Amend Characteristics to *Fl. R.5s*

13° 12′·10N., 80° 23′·60E.

Chart 313 [previous update 132/17]

Amend Characteristics to *Fl. R.5s*

13° 12′·10N., 80° 23′·60E.

Chart 3001 (INT 7402) [previous update 132/17]

Amend Characteristics to *Fl. R.5s*

13° 12′·10N., 80° 23′·60E.



SECTION – III**TEMPORARY AND PRELIMINARY NOTICES*****083(T) (08/18) INDIA – EAST COAST – Sacramento Shoal to Kalingapatnam – Unexploded Charges.**

Source: Indian Navy.

1. Unexploded charges reported dumped by Indian Naval Ship in position 17° 00′.00N., 83° 40′.50E on 27 Feb 18 and 01 Mar 18.
2. Mariners to take note.

Charts Affected – 31 (INT 756) – 32 (INT 754) – 391 – 354 (INT 7408).

***084(T) (08/18) BAY OF BENGAL AND ANDAMAN SEA – Andaman Sea– Drilling Operation.**

Source: Myanmar Hydrographic Office.

1. Drilling operation will be carried out by Semi – Submersible Drilling Rig, Noble Cylde Boudreaux (call sign; A8BM6) in below mentioned coordinates till **31 Aug 19:-**

(I) Restricted area boundary coordinates:

Sl. No.	Point	Position
(i)	Point(A)	14° 21′.14N., 95° 21′.75E.
(ii)	Point(B)	14° 21′.18N., 95° 52′.67E.
(iii)	Point(C)	14° 40′.08N., 95° 52′.66E.
(iv)	Point(D)	14° 40′.08N., 96° 10′.79E.
(v)	Point(E)	13° 54′.45N., 96° 10′.76E.
(vi)	Point(F)	13° 54′.41N., 95° 21′.82E.

(II) Individual Surface Location of Well:

Sl. No.	Point	Position
(i)	KKN-57	14° 16′.47N., 96° 05′.27E.
(ii)	KKN-66	14° 16′.19N., 95° 45′.24E.
(iii)	KKN-74	14° 15′.10N., 95° 33′.29E.
(iv)	KKN-82	14° 12′.65N., 95° 35′.26E.
(v)	KKN-25	14° 21′.72N., 95° 59′.89E.
(vi)	KKN-44	14° 24′.02N., 95° 58′.24E.
(vii)	GTK-19	14° 29′.22N., 95° 59′.18E.
(viii)	ZTK-23	13° 59′.88N., 95° 47′.89E.
(ix)	GTK-11	14° 34′.96N., 96° 02′.56E.
(x)	GTK21	14° 31′.14N., 96° 00′.35E.
(xi)	New Play I(Exploration Well)	14° 16′.13N., 95° 28′.00E.

2. During the operation period unauthorized navigation, anchoring, fishing and trawling are prohibited within 4 KM from above mentioned area.
3. Mariners are advised to navigate with caution.

Chart affected– 41 (INT 757).

***085 (P) (08/18) INDIA – WEST COAST – Mumbai Docks – Construction Work.**

Source: Mumbai Port Trust.

1. Construction work of Berth No. 5 at Jawahar Dweep Oil Tanker Terminal at Jawahar Dweep is under progress in area bounded by the following :

- | | |
|---------------------------|----------------------------|
| (a) Buoy with White Light | 18° 56′.10N., 72° 53′.48E. |
| (b) Buoy with White Light | 18° 56′.18N., 72° 53′.63E. |
| (c) Buoy with White Light | 18° 56′.25N., 72° 53′.74E. |
| (d) Buoy with White Light | 18° 56′.36N., 72° 53′.88E. |
| (e) Orange Buoy | 18° 56′.37N., 72° 53′.86E. |
| (f) Orange Buoy | 18° 56′.23N., 72° 53′.42E. |
| (g) Orange Buoy | 18° 56′.34N., 72° 53′.59E. |
| (h) Orange Buoy | 18° 56′.15N., 72° 53′.50E. |

2. Mariners are advised to navigate with caution.

Charts affected – 21 – 22 (INT 752) – 211 – 255 (INT 7334) – 292 (INT 7021) – 293 (INT 7022) – 2076 (INT 7338) – 2016 (INT 7336) – 2015 (INT 7337) – 2001.



SECTION – IV

MARINE INFORMATION

1. NAVTEX TRANSMISSION

Status of MSI Promulgation by NAVTEX Stations is as follows:-

Mauritius (Cassis) - Operational

Seychelles (Mahe)-Operational

Following new Navtex stations along the Indian coast are operating on trial basis:-

INTERNATIONAL NATIONAL NAVTEX FREQUENCY - 518 kHz								
Sl.	Station Name	B1	Broad Cast Timings in UTC					
(a)	Veraval	H	0110	0510	0910	1310	1710	2110
(b)	Vengrula Point	J	0130	0530	0930	1330	1730	2130
(c)	Muttam Point	L	0150	0550	0950	1350	1750	2150
(d)	Porto Novo	O	0220	0620	1020	1420	1820	2220
(e)	Vakalpudi	Q	0240	0640	1040	1440	1840	2240
(f)	Balasure	S	0300	0700	1100	1500	1900	2300
(g)	Keating Point	V	0330	0730	1130	1530	1930	2330

2. MISIDENTIFYING FISHING BOATS AS PIRATE SKIFFS

All merchant vessels entering Indian EEZ are advised that dense fishing activity may be encountered off West Coast of India. Fishing is generally carried out by mechanized boats and single hull boats with outboard motors carrying 4-5 crew using long lines upto 50 NM from coast. The vessels traversing the nets are likely to be approached by fishing boats for safeguarding nets and lines and should not be mistaken as skiffs and PAG's. Masters of vessels to report any suspicious activity of fishing vessels immediately to MRCC (Mumbai) on telephone +91-22-24388065, 24316558, Email: - indsar@vsnl.net, or icgmrc_mumbai@mtnl.net. Any suspicious activity of skiffs/boats to be photographed if possible. Merchant vessels with armed guards on board are to report presence of guards to Indian Navy/Coast Guard while transiting Indian EEZ.

3. DISPLAY ANOMALIES IN ECDIS

(a) Mariners are advised that the International Hydrographic Organization (IHO) check data set shows that some ECDIS systems fail to display some significant underwater features in the standard display mode. The use of this check data set, issued through ENC service providers and available from the IHO website www.iho.int, to check the operation of ECDIS is strongly recommended. JRC has confirmed that certain versions of JRC ECDIS fail to display some types of wreck and obstructions, including stranded wrecks, in any display mode.

Where JRC ECDIS is in use, paper charts should be the primary means of navigation until the ECDIS has been proved to operate correctly. See www.jrc.co.jp/eng/product/marine/whatsnew/20120313/index.html for further information.

(b) Some Electronic Chart Display and Information Systems (ECDIS) may exhibit operating anomalies. The International Maritime Organization's (IMO) circular SN.1/CIRC.312 pages /imodocs.aspx (registration required) lists identified anomalies, Their characteristics and remedial advice. Mariners are reminded that they should access the International Hydrographic Organization (IHO) data presentation and performance check (DPPC) dataset (news links of <http://www.iho.int/srv1>) and ensure that all installed ECDIS units are checked.

4. SAFETY FAIRWAYS, RECOMMENDED ROUTES, TRAFFIC SEPARATION SCHEME

The Director General Shipping has established Safety fairways, recommended routes and traffic separation scheme (TSS) in restricted Indian waters including the offshore development area to enhance safety of navigation. The details of coordinates for the above have been published in the fortnightly Indian Notices to Mariners Edition No 07 of 2018(01st April 2018).

(a) Safety Fairways: An area within which permits are not granted for the erection of oil or gas related structures. The use of a safety fairway is not usually mandatory, but is recommended. Safety fairways have been promulgated in and round offshore development area in Arabian Sea up to the Exclusive Economic Zone (EEZ) due to increased weather related marine accidents and dense traffic. These are mandatory for all Indian ships and vessels transiting through the ODA and recommendatory for all foreign flag ships and vessels irrespective of size.

(b) Traffic Separation Schemes (TSS). The TSS off Mumbai harbour is mandatory for all Indian and foreign flag ships and vessels entering and leaving Mumbai harbour and Jawaharlal Nehru Port Trust (JNPT)/ Nhava-Sheva harbour irrespective of size.

5. GAGAN SYSTEM COMMISSIONED FOR OPERATIONS

The GAGAN System is now commissioned for safety of life, civil aviation, and en-route operations in addition to all other non-aviation applications. The GAGAN signal is being broadcasted through GSAT-8 and GSAT-10 with PRN127 & 128 respectively.

All the GPS users are requested to enable SBAS functionality in their receivers, configure it to receive PRN-127 & 128 and avail the benefits of GAGAN in terms of increased accuracy and reliability. There may be occasional signal outages due to system up-gradation activities.

6. USAGE OF THURAYA/ IRRIDUM AND SATELLITE PHONE

The use of Thuraya, Iridium and other such satellite phone is banned in India under Sec 6 of Indian Wireless Act and Sec 20 of Indian Telegraph Act. It is intimated to all shipping companies/ shipping agents that use of Thuraya/ Iridium and other such satellite phones are banned in Indian waters and seafarers should not use the same.

Satellite phones can be used only after no objections certificate issued by department of telecommunication (DOT) on a case to case basis. The shipping agents should mandatorily intimate the details of person carrying Thuraya and the particulars of Thuraya, Iridium and other such sets in pre arrival notification on security (PANS).

The unauthorized holders of Thuraya/ Iridium and other such Satellite phones can be prosecuted under Sec 6 of Indian Wireless Act and Sec 20 of Indian Telegraph Act.

7. CAUTIONARY NOTE

There is a finite amount of lag between publication of large and small scale Indian Nautical Charts. To avoid uncertainty the mariners are advised to use large scale charts for coastal navigation wherever applicable and available. In addition, mariners are to refer large scale charts in conjunction with small scale charts in areas where both overlap during both planning and conduct of passage.

List of Indian Chart Agents

<p>OSA Books and Periodicals R-246, Greater Kailash –I, New Delhi - 110 048 Tel/Fax: +91-11-26418643, 46557337, Mob: 9971093992 Email: rpani246@gmail.com</p>	<p>M/s VDO Marine Insrtuments Shanghar Building, PO Bag No – 645, 45/271, Corner of Bristow & Naval Road, Willingdon Island, Kochi – 682 003 Tel: +91 484 2667157 Fax: +91 484 2667121 Email: atmain@md4.vsnl.net.in</p>
<p>M/s Global Charts & Nav. Aids Pvt. Limited 1A, Goa Mansion, Ground Floor, 58, Dr. SunderlalBahl Path (Goa Street), Fort, Mumbai - 400 001 Tel: 91-22-22626318, 22626380 Fax: 91-22-22621488 Email: sales@globalcharts.in Web: www.globalcharts.com.sg</p>	<p>E.W.Liner Charts & Publication (India) 2/524, Sandeep Road, ChinnaNeelangarai, Chennai - 600041 Tele: +91-44-24490668 Fax: +91-44-24491668 Mob No : +91-9003245348 Email: ewl-india@ewliner.com Web: www.ewliner.com</p>
<p>M/s C & C Marine Combine 25 Bank Street, 1st Floor, Fort Mumbai - 400 023 Tel: 91-22- 22660017/0018/0525/1937 Ext: 32 Tel: 91-22-22672143 Fax: 91-22-22670896 Email: vijay@ccmarine.in, sales@ccmarine.in</p>	<p>M/s Engineering Logistics Executive Multi Services Elems Charts, Door No: 61-4-45-A/4, Prakash Nagar, Malkapuram Visakhapatnam – 530 011 Mob: +91 9133871827 Email: sales@elemscharts.in Web: www.elemscharts.in</p>
<p>M/s SVR Chart Agencies Door No.50-81-48/4, Seetammapeta, Visakhapatnam – 530 016 Tel/ Fax: 0891-2799471, Cell: +91-9849120988, 9885797333 Email : mahalakshmitravels99@gmail.com mahalakshmitravels@hotmail.com</p>	<p>SMS Marine Private Ltd 505, Raheja Arcade, Sector 11, CBD Belapur, Navi Mumbai – 400 614 Tel: +91-22-62233326, Fax: 022-67939504 Mobile: +91 9820 238 542 Email: info@c-map.co.in , raj.chakravorty@smsmap.com Web: www.smsmaps.co.in</p>
<p>M/s JM Maritime Services 24/24C Kavarana Building, Ground Floor, WadiBunder, P.D. Mellow Road, Mumbai – 400 009 Tel: +91 22 23736956, Fax: 022 - 23725083 Cell: +91 9820788357 Email : jmms@mtnl.net.in , charts@mtnl.net.in</p>	<p>M/s Global Marine Infratech Pvt. Ltd. SikshaSandan, Ground Floor, Plot No. ND7, VIP Area, IRC Village, Bhubaneswar – 751015 Tel: +91-674-2550599, Fax: +91-674-2551899 Cell:- +91-9337477799, 7077702499 Email: tusarkantha@gmiindia.in Web: www.gmiindia.in</p>
<p>M/s Lift o Marine Allen’s Mansion, C6, Nungi Station Road, Bata Nagar, Kolkata – 700 140 Tel: +91 9836972027 Fax: 033 24924283 Email: sankar@liftomarine.org, liftomarine77@gmail.com Web: www.liftomarine.org</p>	<p>L. R. Marine Services 301, 3rd Floor, Biryas House, 265, PerinNariman Street, Fort, Mumbai - 400 001. Tel: +91-22-2269 1535, Fax: +91-22-66359148 Cell No: +91 8108926880/ +91 98214 60258 Email: lrcharts@gmail.com, lrmarine@live.com</p>
<p>M/s Zenith Surveys (I) Pvt. Ltd. Lakhani’sPlam View, First Floor, Office No. 889, Sector 48, Nerul, Navi Mumbai – 400 706 Tel/ Fax: +91-22- 27708011 Email: zenithsurveys703@gmail.com nyvmane@yahoo.com Web: www.zenithsurvey.com</p>	<p>IIC Technologies Limited 8-2-350/5/B-22, Road No. 3, Banjara Hills, Hyderabad – 500 034, Telangana Tel: +91 40 39144444 Fax: +91 40 39144455 Email: somnath.marthi@iictechnologies.com sanjeev.sharma@iictechnologies.com Web: www.iictechnologies.com</p>

SECTION – V**NAVAREA – VIII WARNINGS IN FORCE**

1. For details of NAVAREA limits and organisation/coordination, please refer to Notice No. 12 of the Special edition of Indian Notice to Mariners – 2012.

2. NAVAREA VIII Warnings in force as on 15 Apr18:

2016 SERIES – 723
2017 SERIES – 305 345 394 493 529 635 685 697 723 762 814 829 866 872 876
2018 SERIES – 028 047 049 056 095 145 168 185 186 187 197 198 203 222 230 232 233 238 242 246 248 251 252 255 256 260 269 271 276 278 279 281 283 285 287 288 289 291 292 293 294 295 296 297 298 299

3. NAVAREA VIII Warnings issued during the period from 01Apr 18to 15 Apr18(both dates inclusive) are as tabulated below:–

258. India West Coast - off Trivandrum. Charts 22 222 INT 71. Rocket Launch from Thumba scheduled On 06, 07, 08 Apr 18 from 1300-1500 UTC.
2. Danger sector extending upto 110 Nm within bearing 220 To 260 from 08-32.05N 076-52.01E.
3. Cancel this MSG 081600 UTC Apr 18.
259. India West Coast – Okha. Charts 21 203 2068 INT 71. Firing by Naval Coast Battery scheduled on 06 Apr 18 from 0530-0730 UTC.
2. Danger sector extending upto 12 nm within bearing 300 to 020 from 22-28.04N 069-04.99E.
3. Cancel this MSG 060830 UTC Apr 18.
260. Andaman Sea – Off BarrenI. Charts 41 473 INT 71. Firing practice by CG aircraft scheduled on 05, 06, 12, 13, 19, 20, 26, 27 Apr 18 from 0430-0930 UTC in danger area bounded within 11-50N to 12-00N and 093-40E to 094-10E.
2. Cancel this MSG 271030 UTC Apr 18.
261. North Indian Ocean . Chart INT 71. SLFV Lakshi Duwa1 reported adrift 04-20N 079-25E at 010430 UTC Apr 18
2. Cancel this MSG 040430 UTC Apr 18.
262. Cancel NAVAREA VIII 171, 234 And This MSG.
263. India West Coast – off Agatti I. Charts 22 INT 71. Unmanned capsized fishing boat reported adrift 10-25.9N 071-04.8E at 020405 UTC Apr 18.
2. Cancel this MSG 050405 UTC Apr 18.
264. Cancel NAVAREA VIII 245 and this MSG.
265. India East Coast – Central Bay Of Bengal. Charts 31 INT 71 706 . Firing by Naval Ships scheduled from 070130 - 081030 UTC Apr 18 in danger area bounded by 17-32N 086-18.2E, 17-32N 087-48E, 15-48N 088-18E, 14-56N 088-18E, 14-16N 087-54E, 14-16N 086-27E, 14-49N 085-30E, 16-11N 085-30E.
2. Cancel this MSG 081130 UTC Apr 18.
266. India West Coast. Charts 251 254 255 292 INT 71. Rig list:-
ABAN ICE 19-13.88N 071-02.41E
ABAN III 18-16.38N 072-22.82E
ACTINIA 19-19.57N 071-01.61E
CE THORNTON 18-29.86N 072-15.00E
DEEP DRILLER 4 21-03.93N 072-31.62E
DEEP SEA FORTUNE 19-40.15N 072-00.33E
DEEP SEA FOSSIL 19-18.12N 071-30.38E
DEEP SEA MATDRILL 20-39.70N 072-15.80E
FG MCCLINTOCK 18-45.65N 072-19.22E
GREAT DRILL CHAAYA 19-15.20N 072-02.16E
GREAT DRILL CHAARU 19-10.81N 072-07.03E
GREAT DRILL CHETNA 19-12.91N 071-01.06E
GREAT DRILL CHITRA 19-22.58N 071-00.85E
HARVEY H WARD 19-10.48N 070-59.02E New
JINDAL STAR 20-19.08N 072-00.87E
JINDAL SUPREME 19-41.90N 072-19.83E
JT ANGEL 19-20.95N 071-18.20E
NOBLE ED HOLT 20-11.53N 071-52.25E
PARAMESWARA 20-13.10N 071-49.00E
SAGAR GAURAV 22-26.27N 068-34.43E
SAGAR JYOTI 19-04.70N 071-54.11E

266. Continued.	
SAGAR KIRAN	19-07.35N 072-06.45E
SAGAR SHAKTI	19-15.95N 070-56.47E
SAGAR UDAY	19-08.42N 070-53.87E
TRIDENT II	19-17.81N 070-56.18E
TRIDENT XII	19-14.80N 070-59.00E
VICTORY DRILLER	19-28.70N 071-46.66E
VIRTUE-I	19-15.20N 072-02.17E
VIVEKANANDA1	19-15.64N 072-06.59E
VIVEKANANDA2	19-11.05N 072-11.20E
2.	Wide berth requested.
3.	Cancel NAVAREA VIII MSG 257 .
267. India East Coast.	Charts 355 356 INT 706. Rig list:-
ABAN ABRAHAM	16-13.90N 082-13.70E
ABAN II	16-17.90N 081-52.56E
ESSAR WILDCAT	16-31.96N 082-22.69E
JACK BATES	16-16.17N 082-14.93E
OLINDA STAR	16-24.34N 082-21.12E
PLATINUM EXPLORER	16-18.70N 082-17.80E New
SAGAR RATNA	16-22.43N 081-58.65E
SAGAR VIJAY	16-28.32N 082-22.34E
2.	Wide berth requested.
3.	Cancel NAVAREA VIII MSG 177.
268. India West Coast – off Mumbai.	Charts 21 255 292 INT 71. SV Polar Marquis progressing seismic survey in areas bounded by 18-55N 071-33E, 19-12N 071-33E, 19-12N 072-01E, 19-01.2N 072-01E, 19-01.2N 072-19.5E, 18-54.5N 072-19.5E and 18-50N 071-40E, 18-50N 071-49.8E, 18-50N 071-53E, 18-50N 071-53.7E, 18-50N 072-12E, 18-50N 072-19E, 18-40N 072-19E, 18-40N 071-40E . Vessel towing 12 streamers of 6 km . Wide berth requested.
2.	Cancel this MSG 131830 UTC Apr 18.
269. India East Coast – off Vadarevu Port.	Charts 31 355 INT 71 . OSV Coastal Triumph progressing survey using towed equipments in area bounded by 15-26.45N 080-30.14E, 15-28.61N 080-32.69E, 15-22.51N 080-38.6E, 15-20.35N 080-36.07E . Wide berth requested.
2.	Cancel this MSG 151830 UTC Apr 18.
270. India West Coast – off Mumbai.	Charts 21 211 255 292 2016 INT 71. CS Niwa progressing cable repair using ROV in area bounded by 18-56.5N 072-11.7E, 18-58.4N 072-11.7E, 18-59.1N 072-28E, 18-57.5N 072-58E. wide berth requested.
2.	Cancel this MSG 181830 UTC Apr 18.
271. Andaman Sea - Nicobar I.	Charts 41 408 4163 INT 71. Chowra Lt (08-28N 093-03E) unlit.
272. Cancel NAVAREA VIII 265 and this MSG.	
273. India West Coast.	Charts 251 254 255 292 INT 71. Rig list:-
ABAN ICE	19-13.88N 071-02.41E
ABAN III	18-16.38N 072-22.82E
ACTINIA	19-19.57N 071-01.61E
CE THORNTON	18-29.86N 072-15.00E
DEEP DRILLER 4	21-03.93N 072-31.62E
DEEP SEA FORTUNE	19-40.15N 072-00.33E
DEEP SEA FOSSIL	19-18.12N 071-30.38E
DEEP SEA MATDRILL	20-39.70N 072-15.80E
FG MCCLINTOCK	18-45.65N 072-19.22E
GREAT DRILL CHAAYA	18-34.07N 072-13.27E New
GREAT DRILL CHAARU	19-10.81N 072-07.03E
GREAT DRILL CHETNA	19-12.91N 071-01.06E
GREAT DRILL CHITRA	19-22.58N 071-00.85E
HARVEY H WARD	19-10.48N 070-59.02E
JINDAL STAR	20-19.08N 072-00.87E
JINDAL SUPREME	19-41.90N 072-19.83E
JT ANGEL	19-20.95N 071-18.20E
NOBLE ED HOLT	20-11.53N 071-52.25E
PARAMESWARA	20-13.10N 071-49.00E
SAGAR GAURAV	22-26.27N 068-34.43E
SAGAR JYOTI	19-04.70N 071-54.11E
SAGAR KIRAN	19-07.35N 072-06.45E
SAGAR SHAKTI	19-15.95N 070-56.47E
SAGAR UDAY	19-08.42N 070-53.87E

273. Continued.	
TRIDENT II	20-09.54N 071-47.43E New
TRIDENT XII	19-14.80N 070-59.00E
VICTORY DRILLER	19-28.70N 071-46.66E
VIRTUE-I	19-15.20N 072-02.17E
VIVEKANANDA1	19-15.64N 072-06.59E
VIVEKANANDA2	19-11.05N 072-11.20E
2.	Wide berth requested.
3.	Cancel NAVAREA VIII MSG 266.
274. India East Coast.	Charts 355 356 INT 706. Rig list:-
ABAN ABRAHAM	16-13.90N 082-13.70E
ABAN II	16-17.90N 081-52.56E
ESSAR WILDCAT	16-31.96N 082-22.69E
JACK BATES	16-25.70N 082-23.43E New
OLINDA STAR	16-24.34N 082-21.12E
PLATINUM EXPLORER	16-18.70N 082-17.80E
SAGAR RATNA	16-22.43N 081-58.65E
SAGAR VIJAY	16-28.32N 082-22.34E
2.	Wide berth requested.
3.	Cancel NAVAREA VIII MSG 267 .
275. Bay Of Bengal, Andaman Sea, Pacific Ocean.	Charts 32, 41, 356 INT 71. PSLV Launch scheduled from 11 – 19 Apr 18 for 04 hrs from 2145 UTC.
2.	Danger zone as follows: Zone -1: Circle Of 10 nm from 13-43.9N 080-14.2E. Zone-2: 13-30N 080-30E, 13-50N 080-35E, 13-35N 081-30E, 13-15N 081-25E. Zone-3: 13-00N 082-10E, 13-30N 082-15E, 12-55N 084-05E, 12-25N 084-00E. Zone-4: 12-20N 084-05E, 13-00N 084-15E, 12-45N 085-10E, 12-05N 085-00E. Zone-5: 11-10N 088-25E, 11-45N 088-35E, 11-25N 089-40E, 10-50N 089-30E. Zone-6: 09-05N 094-50E, 09-55N 095-05E, 09-35N 096-00E, 08-45N 095-45E. Zone-7: 19-00S 134-00W, 17-00S 134-00W, 13-00S 112-00W, 07-30S 090-00W, 09-30S 090-00W, 15-00S 112-00W.
3.	Cancel this MSG 200245 UTC Apr 18.
276. India West Coast – off Porbandar.	Charts 21 204 205 252 INT 71. Firing from Kathiawar range scheduled on 07,11, 12, 13, 14 Apr 18 from 0230-1030 UTC in danger area bounded by 22-12N 068-36.33E, 21-15.5N 069-04E, 21-09N 069-40E, 21-15.5N 069-42.5E, 22-05.75N 068-49E.
2.	Cancel this MSG 141130 UTC Apr 18.
277. India East Coast – off Kakinada.	Charts 31 32 INT 71. Firing by Naval ships scheduled on 10 Apr 18 from 0030 – 0500 UTC in danger area bounded by 15-30N 083-24E, 16-14N 084-00E, 15-34N 084-46E 15-08N 084-24E.
2.	Cancel this MSG 100600 UTC Apr 18.
278. India West Coast – NeelamOda.	Charts 21 211 255 292 293 2016 INT 71. MV Chandra Jupiter progressing survey in area bounded by 18-49.2N 072-09.49E, 18-48.81N 072-28.67E, 17-58.73N 072-27.66E, 17-59.05N 072-08.58E. Wide berth requested.
2.	Cancel this MSG 151830 UTC May 18.
279. India West Coast – Off NeelamOda.	Charts 21 211 255 292 INT 71. SV Lts3000 progressing installation in vicinity of 18-56.90N 072-15.93E, 18-41.47N 072-21.22E. Wide berth requested.
2.	Cancel this MSG 301830 UTC May 18.
280. NAVAREA VIII Warnings in force as on 06 Apr 18:-	
	2016 SERIES – 723
	2017 SERIES – 305 345 394 493 529 635 685 697 723 762 814 829 836 866 872 876
	2018 SERIES – 028 047 049 056 095 145 160 168 185 186 187 197 198 203 222 230 232
	233 238 242 246 248 250 251 252 254 255 256 258 260 268 269 270 271 273 274 275
	276 277 278 279
	(A) NAVAREA VIII Warnings less than 42 days promulgated via safety net.
	(B) Text of NAVAREA VIII warnings in force including those which no longer broadcast available in www.hydrobharat.gov.in
2.	Cancel this MSG 131830 UTC Apr 18.
281. India West Coast - off Mumbai To Jakhau.	Charts 21 202 203 251 253 254 255 291 292 INT 71. SV Fugro Mapper progressing survey in vicinity of 20-14.85N 071-57.78E, 20-05.42N 071-53.13E, 18-30.06N 072-15.95E, 18-38.79N 072-14.97E, 19-13.54N 070-48.33E, 19-34.27N 071-38.04E, 19-39.26N 071-33.14E, 19-26.15N 071-18.63E, 19-05.34N 072-06.88E, 21-37.97N 068-26.41E, 22-57.11N 068-32.30E and from 22-27.92N 068-48.86E to 22-23.81N 068-58.31E from 01 - 07 May 18. Wide berth requested.
2.	Cancel NAVAREA VIII 254 and this MSG 071830 UTC May 18.
282. Cancel NAVAREA VIII 836/17 and this MSG.	
283. Lakshadweep Sea - off Cape Comorin.	Charts 23 261 INT 71. Upturned hull approximately 15 mtrs reported

283. Continued. adrift 06-48.3N 077-18.6E. 2. Cancel this MSG 141000 UTC Apr 18.
284. India West Coast – Safety Fairway and Deep Water Route off Okha. Charts 21 202 251 271 291 2068INT 71. MT Revti progressing survey using towed sonar in area bounded by 21-24.9N 068-57.23E, 22-24.3N 068-25.63E, 22-23.31N 068-58.14E, 22-23.92N 068-58.14E. Wide berth requested. 2. Cancel this MSG 301830 UTC Apr 18.
285. India East Coast – off Chennai. Charts 32 313 356 357 INT 71. Firing by CG aircraft scheduled daily from 16 - 30 Apr 18 from 0130 - 1130 UTC in danger area bounded within 12-49N to 12-59N and 080-46E to 081-26E. 2. Cancel this MSG 301230 UTC Apr 18.
286. Cancel NAVAREA VIII 160 and this MSG.
287. India West Coast – Safety Fairway and Deep Water Route off Okha. Charts 21 202 251 271 291 2068INT 71. MT Revti progressing survey using towed sonar in area bounded by 22-24.9N 068-57.23E, 22-24.3N 068-25.63E, 22-23.31N 068-58.14E, 22-23.92N 068-58.14E. Wide berth requested. 2. Cancel NAVAREA VIII 284 and this MSG 301830 UTC Apr 18.
288. India West Coast – off Mumbai. Charts 21 211 255 292 2016 INT 71. CS Niwa progressing cable repair using ROV in area bounded by 18-56.5N 072-11.7E, 18-58.4N 072-11.7E, 18-59.1N 072-23E, 18-57.5N 072-23E. Wide berth requested. 2. Cancel NAVAREA VIII 270 and this MSG 181830 UTC Apr 18.
289. Andaman Sea – off Pigeon I. Charts 41 409 472 INT 71. INS Investigator progressing hydrographic survey in area bounded within 06-55.13N to 07-12.8N and 093-51.7E TO 094-00.4E .Wide berth from ship and survey boats requested. 2. Cancel this MSG 171830 UTC Apr 18.
290. Cancel NAVAREA VIII 275 and this MSG.
291. India West Coast - off Karwar. Charts 21 215 257 293 INT 71 705. Firing by Naval Ships scheduled on 17 Apr 18 from 0800-1430 UTC In danger area bounded within 14-08N to 14-40N and 072-42E to 073-15E. 2. Cancel this MSG 171530 UTC Apr 18.
292. India West Coast – off Netrani I. Charts 22 216 257 293 2072 INT 71. Firing by Naval Ships scheduled on 17 Apr 18 from 0001 - 0530 UTC in danger area bounded within 13-56.2N to 14-07.2N and 074-13.6E to 074-25.07E. 2. Cancel this MSG 170630 UTC Apr 18.
293. India West Coast - off Trivandrum. Charts 22 222 INT 71. Rocket launch from Thumba(08-31.98N 076-52.05E) scheduled on 18 Apr 18 from 0530-0730 UTC. 2. Danger sector: (A) Radius of 05 nm from Thumba between azimuth 190 and 300. (B) Radii of 45 and 75 nm from Thumba between azimuth 220 and 260. 3. Cancel this MSG 180830 UTC Apr 18.
294. India East Coast- Vishakhapatnam. Charts 31 308 3002 INT 71. Firing by Naval Coast Battery scheduled on 18 Apr 18 from 0001 - 0130 UTC in danger sector extending upto 17 nm between bearing 070 and 130 from 17-42N 083-18E. 2. Cancel this MSG 180230 UTC Apr 18.
295. India West Coast - off Jafarabad. Charts 21 210 254 292 INT 71. SV KNK Ayaana progressing survey using towed equipment in areas bounded by (A) 20-10.89N 071-22.73E, 20-04.33N 071-29.72E, 20-00.49N 071-28.82E, 20-00.39N 071-26.07E, 20-06.73N 071-25.01E, 20-06.53N 071-20.23E, 20-08.94N 071-18.87E (B) 20-09.54N 071-24.17E, 20-20.73N 072-01.41E, 20-19.69N 072-01.82E, 20-08.68N 071-25.09E. Wide berth requested. 2. Cancel this MSG 121830 UTC May 18.
296. India West Coast – off NeelamOda. Charts 21 211 255 292 INT 71. SV Polar Marquis progressing seismic survey in area bounded by 18-50N 071-40E, 18-50N 071-49.8E, 18-50N 071-53E, 18-50N 071-53.7E, 18-50N 072-12E, 18-50N 072-19E, 18-40N 072-19E, 18-40N 071-40E. Vessel towing 12 streamers of 06 km. Wide berth requested. 2. Cancel this MSG 171830 UTC Apr 18.
297. India West Coast. Charts 251 254 255 292 INT 71. Rig list: ABAN ICE 19-13.88N 071-02.41E ACTINIA 19-19.57N 071-01.61E CE THORNTON 18-29.86N 072-15.00E DEEP DRILLER 4 21-03.93N 072-31.62E DEEP SEA FORTUNE 19-40.15N 072-00.33E DEEP SEA FOSSIL 19-18.12N 071-30.38E DEEP SEA MATDRILL 20-39.70N 072-15.80E FG MCCLINTOCK 18-45.65N 072-19.22E GREAT DRILL CHAAYA 18-34.07N 072-13.27E GREAT DRILL CHAARU 19-10.81N 072-07.03E GREAT DRILL CHETNA 19-12.91N 071-01.06E GREAT DRILL CHITRA 19-22.58N 071-00.85E HARVEY H WARD 19-10.48N 070-59.02E JINDAL STAR 20-19.08N 072-00.87E

297. Continued.	
JINDAL SUPREME	19-41.90N 072-19.83E
JT ANGEL	19-20.95N 071-18.20E
NOBLE ED HOLT	20-11.53N 071-52.25E
PARAMESWARA	20-13.10N 071-49.00E
SAGAR GAURAV	22-26.27N 068-34.43E
SAGAR JYOTI	19-04.70N 071-54.11E
SAGAR KIRAN	19-07.35N 072-06.45E
SAGAR SHAKTI	19-15.95N 070-56.47E
SAGAR UDAY	19-08.42N 070-53.87E
TRIDENT II	20-09.54N 071-47.43E
TRIDENT XII	19-26.06N 071-12.96E New
VICTORY DRILLER	19-28.70N 071-46.66E
VIRTUE-I	19-15.20N 072-02.17E
VIVEKANANDA1	19-15.64N 072-06.59E
VIVEKANANDA2	19-11.05N 072-11.20E
2.	Wide berth requested.
3.	Cancel NAVAREA VIII MSG 273 .
298. India East Coast. Charts 355 356 INT 706. Rig list:	
ABAN ABRAHAM	16-13.90N 082-13.70E
ABAN II	16-17.90N 081-52.56E
ESSAR WILDCAT	15-19.58N 080-33.30E New
JACK BATES	16-25.70N 082-23.43E
OLINDA STAR	16-24.34N 082-21.12E
PLATINUM EXPLORER	16-18.70N 082-17.80E
SAGAR RATNA	16-22.43N 081-58.65E
SAGAR VIJAY	16-28.32N 082-22.34E
2.	Wide berth requested.
3.	Cancel NAVAREA VIII MSG 274.
299. India West Coast – Neelam, Mukta And Tapti Oda. Charts 21 22 210 211 212 254 255 256 292 293 2016 INT 71. SV MV Flamboyan progressing surveyin area bounded by (A) 18-49.2N 072-09.49E, 18-48.81N 072-28.67E, 17-58.73N 072-27.66E, 17-59.05N 072-08.58E (B) 19-42.36N 070-56.18E, 19-41.28N 072-09.73E, 18-54.89N 072-20.56E, 18-55.08N 071-46.56E, 18-55.74N 071-01.96E, 19-05.85N 070-55.71E (C) 20-37.99N 071-56.7E, 20-37.8N 072-07.22E, 20-03.33N 072-06.53E, 20-03.75N 071-40.63E. Wide berth requested.	
2.	Cancel this MSG 311830 UTC May 18.
300. NAVAREA VIII Warnings in force as on 13 Apr 18:-	
2016 SERIES – 723	
2017 SERIES – 305 345 394 493 529 635 685 697 723 762 814 829 866 872 876	
2018 SERIES – 028 047 049 056 095 145 168 185 186 187 197 198 203 222 230 232 233 238 242 246 248 251 252 255 256 260 269 271 276 278 279 281 283 285 287 288 289 291 292 293 294 295 296 297 298 299	
(A)	NAVAREA VIII Warnings less than 42 days promulgated via safetynet.
(B)	Text of NAVAREA VIII warnings inforce including those which no longer broadcast available in www.hydrobharat.gov.in
2.	Cancel this MSG 201830 UTC Apr 18.

SECTION – VI
CORRECTIONS TO SAILING DIRECTIONS (PILOTS)

West coast of India Pilot (INP-1)

Chapter - 7 (Page 280)

(Source: IH-102, HSU Mumbai)

Article 7.214, Para 1, line 3

Delete text “13.5 m” and replace by “8.0 m”

Page 286, Article 7.251, Para 3, line 2

Delete text “13.5 m” and replace by “8.0 m”

Page 286, Article 7.254, Para 2, line 4 & 5

Delete text “13.5 m” and replace by “8.0 m”

SECTION – VII
CORRECTIONS TO LIST OF LIGHTS

No	Name & Location	Position (Lat-Long)	Characteristics	Ht. (mts)	Range (miles)	Structure & Height (mts)	Remarks
D7371.078	SIR BANIYAS -Ra's Khudayriyah	24 15.65 N 52 35.25E	FI R3s	Red Beacon	
*	*	*	*	*	*	*	*
D7371.08	- Ra's Khudayriyah	24 15.72N 52 35.25E	Q G	Green Beacon	
*	*	*	*	*	*	*	*
D7371.12	-Ra's Khudayriyah	24 15.93N 52 36.46 E	FI W 4s	*	*	*	*
*	*	*	*	*	*	*	*
D7371.14	- Ra's Khudayriyah	24 15.94N 52 36.48E	FI W 4s	*	*	*	*
*	*	*	*	*	*	*	*
D7371.15	- Ra's al Buwaytir	24 16.59N 52 36.79E	FI(2)W6s	*	*	*	*
*	*	*	*	*	*	*	*
D7663.7	Removefrom list; deleted						
D7720.2	KHALIJ- E CHABHAR - Damagheh-ye Chabhar. Behashti	25 17.19N 60 36.61E	FI(3)W 10s	38	12		
			*		*		
D7723	-- Kalantari	25 18.90N 60 36.90E	FI(3)G 6s	9	5		
			*		*		
F1222.5	Chowra Island	08 27.67 N 93 03.31 E	FI W 15s	26	9	White metal framework tower 24	<i>f</i> 0.5 TE 2018
-	-	..	Racon	ILRS Vol.2 Station 79600 *

SECTION – VIII
CORRECTION TO LIST OF RADIO SIGNALS

INP 31(1), 2014

(Last correction: Edition No. 05 dated 01 Mar 2018)

NIL

INP 31(2), 2014

(Last correction: Edition No. 07 dated 01 Apr 2018)

PAGE 40, KENYA (634)

Delete entry Mombasa Lt Buoy No 12

(Source: BA 13/18)

(08/18)

INP 31(5), 2017

(Last correction: Edition No. 07 dated 01 Apr 2018)

NIL

INP 31(6), 2012

(Last correction: Edition No. 04 dated 16 Feb 2018)

NIL

SECTION – IX

REPORTING OF NAVIGATIONAL DANGERS

Appeal to all Mariners

1. Mariners at sea whilst on passage, or whilst entering / leaving ports / harbours and other waterways, are requested to look out for new or suspected dangers to navigation, changes in aids to navigation, or corrections to published charts and Sailing Directions. Whenever any such changes / dangers are observed, mariners are requested to notify the same to the Chief Hydrographer to the Government of India at the following address: -

National Hydrographic Office
107-A, Rajpur Road,
Dehradun - 248001
(UTTARAKHAND), INDIA
e-mail: - inho@navy.gov.in, msis-inho@navy.gov.in
Fax No.: +91-135- 2748373
WEB: www.hydrobharat.gov.in

Instructions for filling up IH 102

2. Kindly follow the instructions below in order to help the Hydrographic Office (the recipient) to quickly issue NAVAREA warning / Notice to Mariners for the benefit of all other mariners at sea.

Position Reporting

3. Accurate position or knowledge of position error is of great importance. Latitude and Longitude should only be used to specify position details when they have been fixed by GPS or Astronomical Observations. A full description of the method, equipment, time and datum (WGS 84/ Everest/ Other) used should be given. When position is defined by sextant angles or bearings (true or magnetic to be specified), more than two bearings should be used in order to provide a redundancy check. Distances observed by Radar should be corrected for index errors. Where position is derived after the event, from other observations and/or Dead Reckoning, the methodology of deriving the position should be included.

4. Paper Charts. A copy/tracing of largest scale chart is the best medium for forwarding details, the alterations and additions being shown thereon in red, but adequate details from the chart must be traced in black ink to enable the amendments to be fitted correctly.

5. ENCs. A Screen shot of largest scale usage band ENC with the alterations and additions being shown thereon in red. If it is to report an issue with the display of an ENC, a screen shot of the affected cell should be sent along with details of the ECDIS make and version in use at the time.

Depth Reporting

6. When soundings are obtained using echo sounders, the echo sounding trace should be duly annotated with date, times, position, depths, etc., and forwarded with the IH102. It is important to state whether the echo sounder is set to register depths below the surface or below the keel; in the latter case the vessel's draught should be given. Time and date should be given in order that corrections for the height of the tide may be made where necessary. The make, name and type of echo sounder should also be given.

7. For modern echo sounders that use electronic 'range gating', care should be taken that the correct range scale and appropriate gate width are in use. Older electro-mechanical echo sounders frequently record signals from echoes received back after one or more rotations of the stylus have been completed. Thus with a set whose maximum range is 500m, an echo recorded at 50m may be from depths of 50m, 550m or even 1050m. Soundings recorded beyond the set's nominal range can usually be recognised by the following:

- (a) the trace being weaker than normal for the depth recorded;
- (b) the trace passing through the transmission line;
- (c) the feathery nature of the trace.

As a check that apparently shoal soundings are not due to echoes received beyond the set's nominal range, soundings should be continued until reasonable agreement with charted soundings is reached. However, soundings received after one or more rotations of the stylus can still be useful and should be submitted if they show significant differences from the charted depths. Efforts should be made to identify and negate false echoes if any. The Mariners Handbook (NP100) and Notice 15 Special Edition of Notice to Mariners may be consulted.

8. Reports which cannot be confirmed or are lacking in certain details should not be withheld. Shortcomings should be stressed and any firm expectation of being able to check the information on a succeeding voyage should be notified.

9. Reports of **shoal soundings**, uncharted dangers and aids to navigation out of order should, at the mariner's discretion, also be made by radio to the nearest coast radio station. The draught of modern tankers in such that any uncharted depth under 30 meters or 15 fathoms may be of sufficient importance to justify a radio message.

10. Changes to Port information should be forwarded on Form IH.102A together with form IH.102. Form 102A contains the information required for Sailing Directions and should be used as an *aide memoir*. The Mariners Handbook, NP100, Chapter 8 gives general instructions. Where there is insufficient space on the forms an additional sheet should be used.

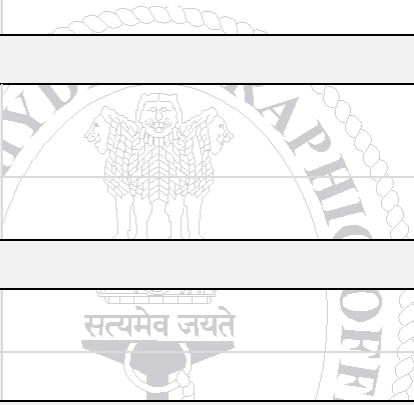

Please Note: - An acknowledgement will be sent by National Hydrographic Office for Hydrographic Notes, on receipt. When a Notice to Mariners is issued, the sender's ship or name is quoted as authority unless the information is also received from other authorities/ foreign Notices to Mariners. Further, communication from National Hydrographic Office to the sender of Hydrographic Notes will only be necessary to verify unusual features or abnormal values reported.

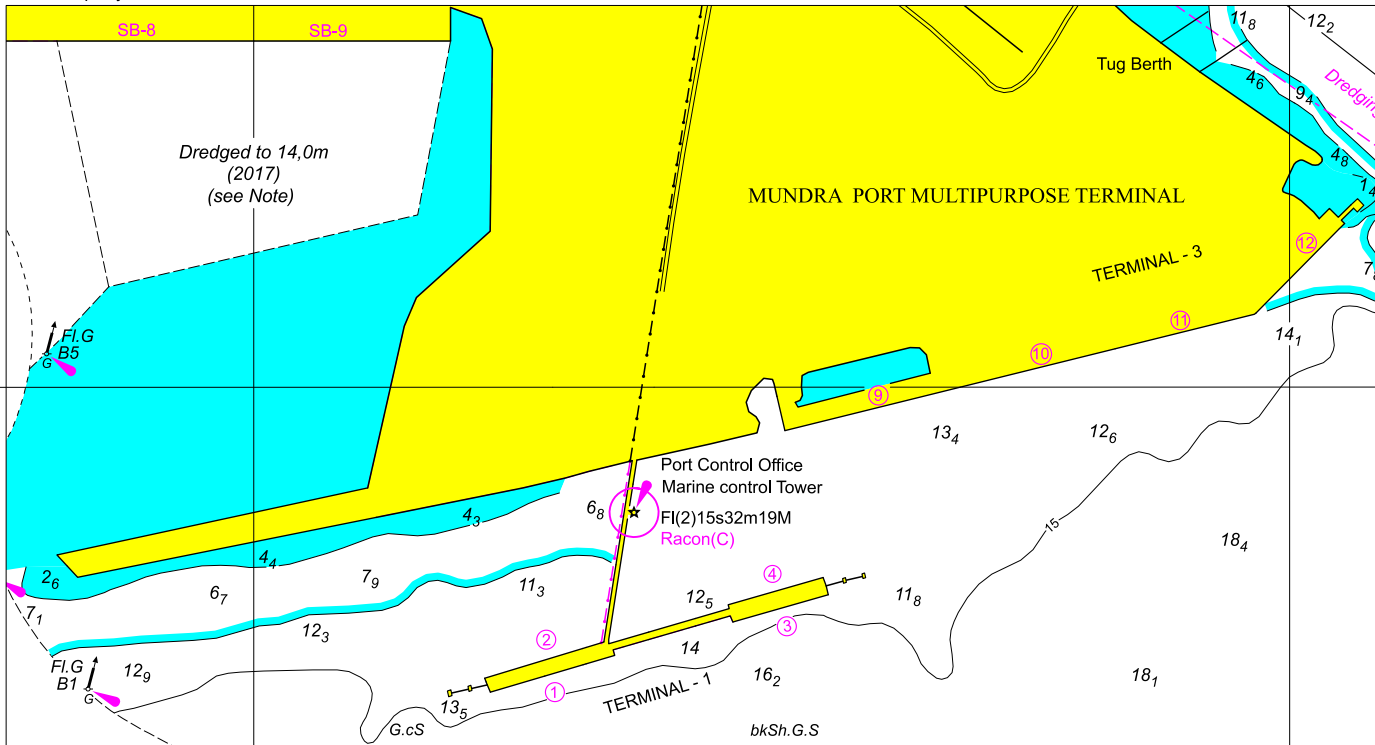


HYDROGRAPHIC NOTE				IH.102 (Revised 2012)	
For Forwarding information for Indian Charts, ENCs and Publications and reporting of ENC related issues					
Date		Ref. Number			
Name of the Ship or Sender					
Address					
Tel/FAX/E-mail address					
Observation Date		Time (UTC/IST)			
Object of Changes Observed (Tick appropriate)	<input type="checkbox"/> Bathymetry	<input type="checkbox"/> Nav. Dangers	<input type="checkbox"/> Nav. aids		
	<input type="checkbox"/> Designated Areas		<input type="checkbox"/> Others		
Geographical Position (See Instructions Overleaf)	Latitude		Longitude		
Position Method	<input type="checkbox"/> DGPS	<input type="checkbox"/> GPS	<input type="checkbox"/> Radar	<input type="checkbox"/> Others	
Datum Used	<input type="checkbox"/> WGS84	<input type="checkbox"/> Everest	<input type="checkbox"/> Others		
Charts Affected				Edition	
Latest Edition of Indian Notices to Mariners Held					
Tracing/Plot/Photograph if enclosed					
ENCs Affected					
Latest Update Disk Held					
Publication Affected				Edition	
Page No./Light No. etc					
Details:					
Limitations if any in Reporting the Changes Above					
Details of Documents/Photos attached:					
Signature of the Master/Reporter/Observer					

HYDROGRAPHIC NOTE FOR PORT INFORMATION (To accompany Form IH.102)		IH.102A (Revised 2012)	
Date		Ref. No.	
Name of the Ship or Sender			
Address			
Tel/Fax/E-mail			
1. NAME OF PORT			
Location	Latitude		Longitude
2. GENERAL REMARKS			
Principal activities and trade			
Number of ships and tonnage handled per year			
Maximum size of draught of vessel handled			
Copy of Port handbook (if available)			
3. ANCHORAGES			
Type / Purpose			
Minimum depth at anchorage			
Shelter afforded			
Holding ground			
Recommended pilotage to the anchorage			
4. PILOTAGE			
Authority for request			
Embarkation position			
Regulations			
Documents to be provided			
Recommended pilotage to approach of Harbour and Berths			
Information on VTMS			
5. DIRECTIONS			
Entry and Berthing Information			
Tides (Height)			
Tidal Stream Information			
Wind Speed and Direction			
Navigational Aids (Beacons / Buoys / Lights / Etc.)			
6. POLLUTION CONTROL			
Local regulation in force (If Any)			
7. TUGS			
Number available / Tug type			
Maximum HP / Bollard pull			

7. TUGS (Continued)	
Requesting authority	
Availability timing / Communication	
Hiring charges	
8. BERTHING AND WHARVES	
Type & Number of berths available	
Length	
Depth alongside	
Facilities available	
Procedure for requesting berth & hiring charges	
9. CARGO HANDLING	
Containers	
Lighters & Ro-Ro etc.	
10. CRANES	
Brief details of Max. lifting capacity, Height of boom at wharf level and Outreach	
Container handling facilities	
11. BRIDGES	
Vertical clearance	
12. REPAIRS	
Hull machinery and underwater	
Ship and Boat yards	
Docking or Slipway facilities (Size/ Dimensions of vessels handled)	
Hards and Ramps	
Divers / Diving assistance	
13. SERVICES	
Radio / FAX / Telephone / Internet etc.	
Medical	
Quarantine	
Consul	
Ship chandlery and Stevedores	
Compass adjustment	
Tank cleaning	
Hull painting	
Police / Ambulance / Firefighting (Fixed and Mobile facilities)	
Nav. Warning and Weather bulletin	
Garbage disposal / Waste oil disposal	
Helicopter landing facilities	

14. RESCUE & DISTRESS	
Salvage, Lifeboat, Life guards, etc	
15. SUPPLIES	
Fuel (Type, Quantities & Method of delivery)	
Fresh water (Method of delivery and Rate of supply)	
Provisions	
Chart agents	
16. COMMUNICATIONS	
Road, Rail and Air services available	
Nearest airport or airfield	
Port Radio and Information Service (Frequencies and Operating Hours)	
17. PORT AUTHORITY	
Designation, Address, Telephone, E-mail Address and Website	
18. SECURITY	
Security of ports / International Ship and Port Facility Security (ISPS) compliance	
Custom and Immigration Regulations in force	
19. SMALL CRAFT FACILITIES	
Information and facilities for small craft, yachts visiting the port	
Yacht clubs, berths etc	
20. SHORT LEAVE	
21. CLUBS RECREATION	
Information Kiosk (Location)	
Foreign Exchange firms / Banks (Within / Near Port Area)	
Places of interest near port	
22. VIEWS	
Photographs(Duly annotated) of the approaches, leading marks, the entrance to the harbour etc.	
23. ADDITIONAL DETAILS	
Any other information considered to be useful for the mariners	
SIGNATURE OF THE OBSERVER / REPORTER / MASTER	





FOR 24 X 7 SAR ASSISTANCE IN INDIAN SRR

Email: indsar@vsnl.net

NATION WIDE SAR TELE: 1554 (LAND LINE)

INMARSAT C (IOR) 441907210 CODE: 43 (TOLL FREE)

AFTN: VABBYXYC