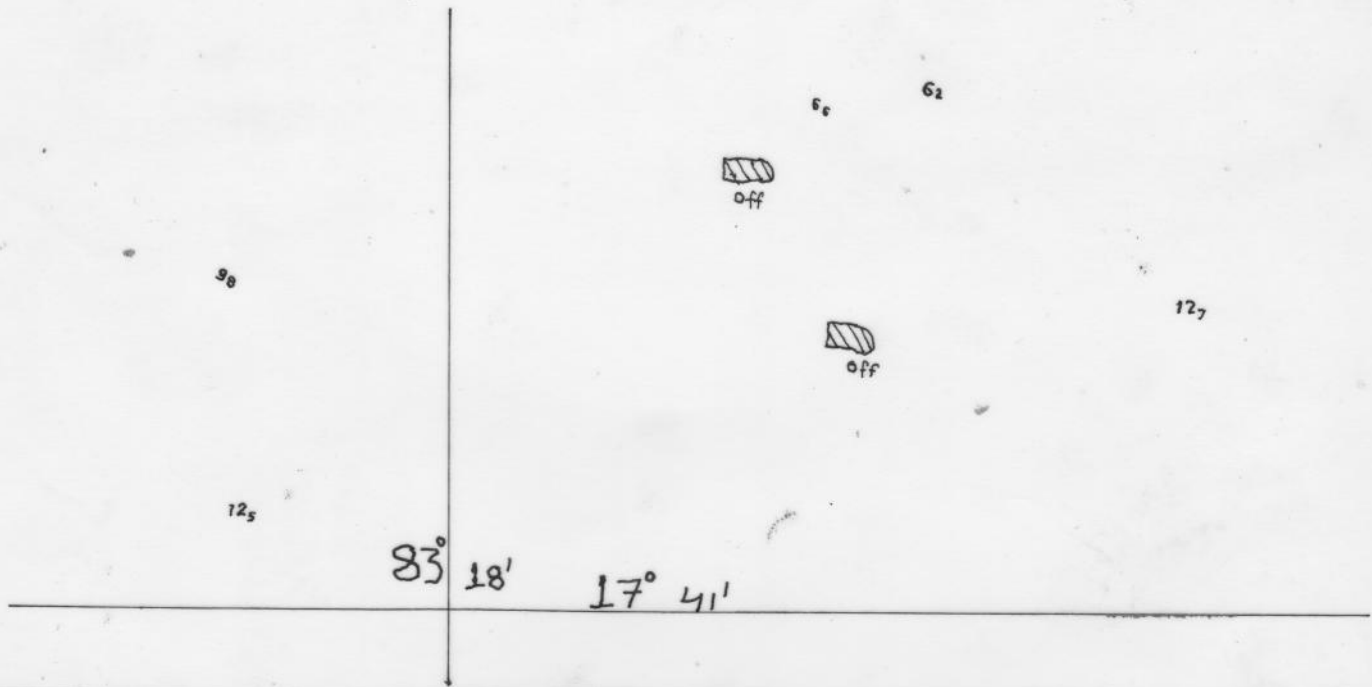
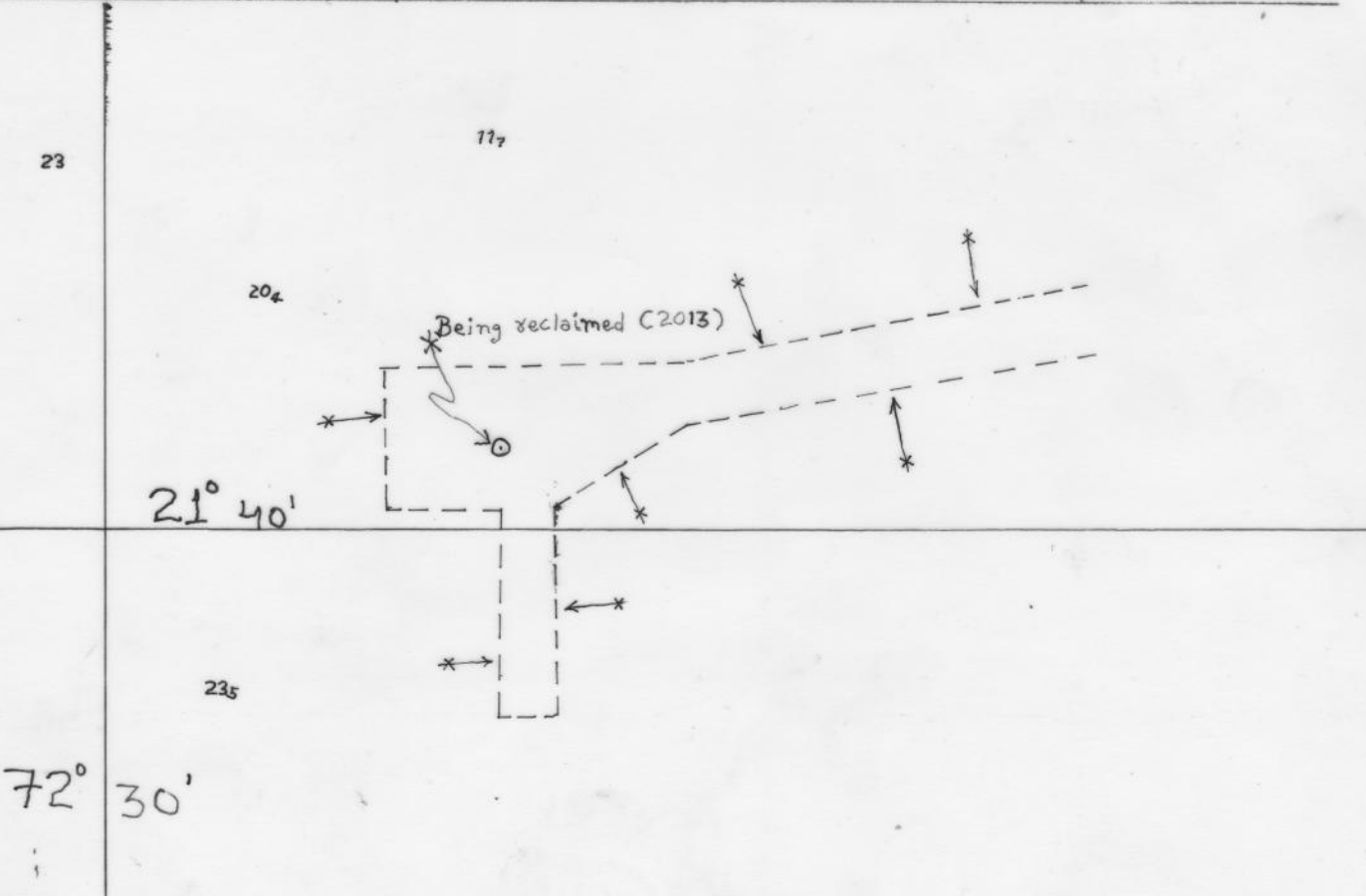


**CAUTION: TRACINGS ARE NOT TO SCALE,**  
**FOR VISUAL APPRECIATION ONLY.**

Folio 05 Tracing size 148 x 210 mm	NM 068 / 14		NE / NE	Chart No.
	Previous update 146 / 12		31 MAY 07	3012 (INT 7411)



Folio 02 Tracing size 148 x 210 mm	NM 067 / 14		NC / NE	Chart No.
	Previous update 066 / 14		30 SEP 05	2082

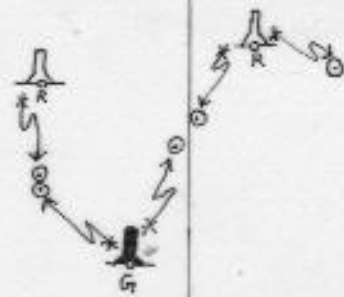


Folio <b>04</b> Tracing size 148 X 210 mm	NM <b>069 114</b>		NC / 圖	Chart No.
	Previous update <b>094 113</b>		<b>30 SEP 05</b>	<b>2047</b>

1028



098



I

I

I

05

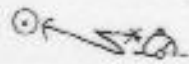
I  
I

11° 12'

54

72° 46'

02



07

Folio 01	NM 070 114		NC / NE	Chart No.
	Previous update 064 / 13		30 SEP 94	290
Tracing size 148 x 210 mm				

24° 00'

58° 00'

28

45



63

Folio 01	NM 070 114		NC / NE	Chart No.
	Previous update 247 / 12		15 JUL 85	246
Tracing size 148 x 210 mm				

24° 00'

58° 00'

322

62

67

26



64

Folio 01	NM 070 14		NC / NE 31 JUL 06	Chart No. 01 2088	01 of 02
Tracing size 148 x 210 mm	Previous update 207/13				

23

72

23° 50'

25

48

58° 10'

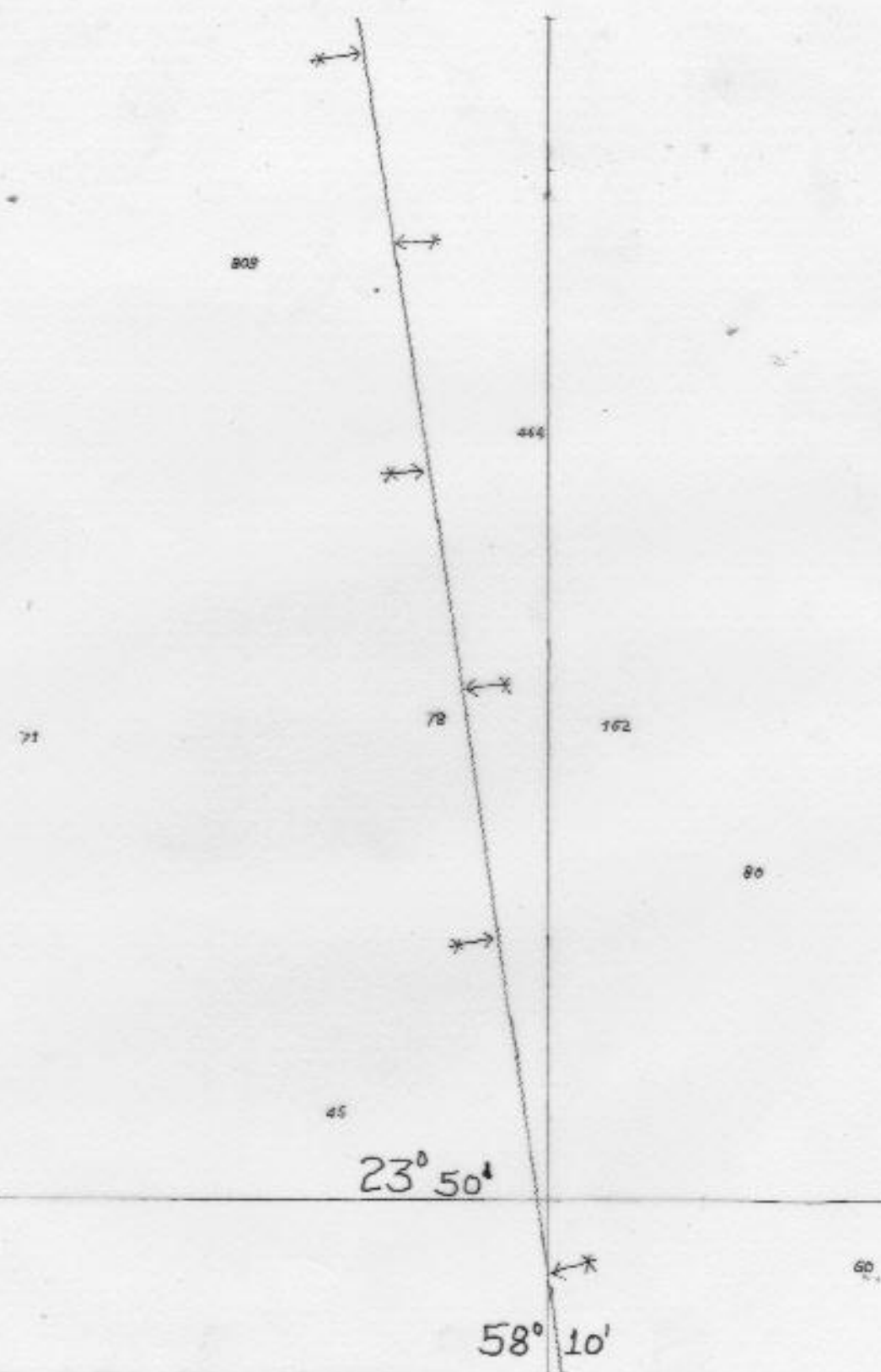
27

24

30

CAUTION: NOT TO SCALE, FOR VISUAL APPRECIATION ONLY

Folio	NM 070 114		NC / NE	Chart No.
01	Previous update 207/13		31 JUL 06	2088
Tracing size 148 x 210 mm				02 of 02



CAUTION: NOT TO SCALE, FOR VISUAL APPRECIATION ONLY

Folio 02	NM 071 114		NC / NE	Chart No.
	Tracing size 148 x 210 mm		Previous update 031 114	15 DEC 88

22  
PA Rep (2014)

M

7

125

29

20

67° 00'

126

24° 30'

Folio 02	NM 071 114		NC / NE	Chart No.
	Tracing size 148 x 210 mm		Previous update 031 114	30 APR 07

13

152

67° 00'

31

24° 45'

15 M

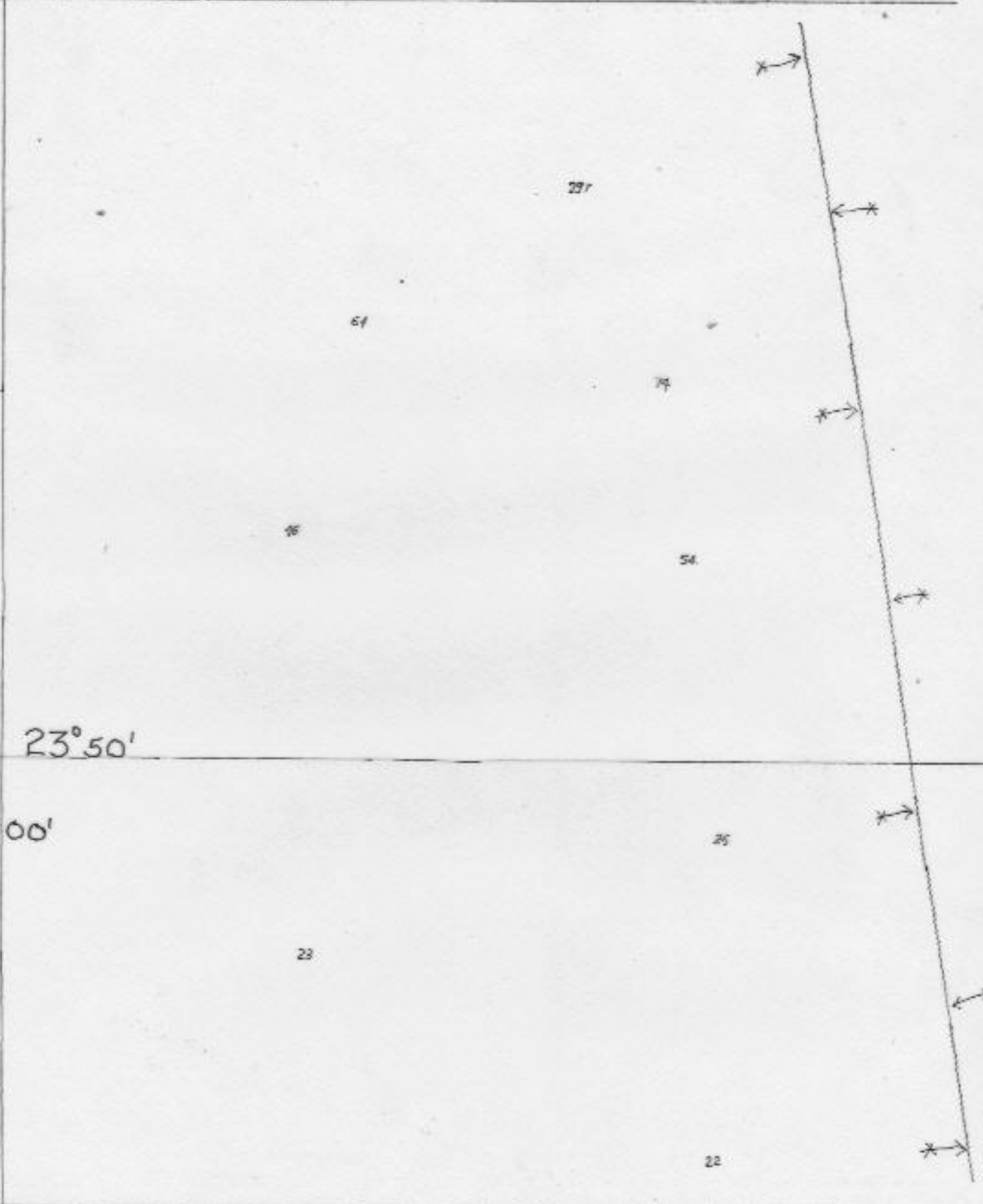
PA Rep (2014)

16

24

Folio <b>01</b>	NM <b>070 114</b>		NC / NE	Chart No.
	Previous update <b>207 / 13</b>		<b>15 MAR 90</b>	<b>2089</b>

Tracing size  
148 X 210 mm



CAUTION: NOT TO SCALE. FOR VISUAL APPRECIATION ONLY



Folio

02

Tracing size  
148 x 210 mm

NM

071 114

Previous update

108 / 13



NC / ~~III~~

Chart No.

15 FEB 02

2049

18.

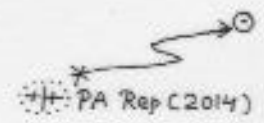
66° 55'  
24° 45'

9.

76s

20s

16s



PA Rep (2014)