
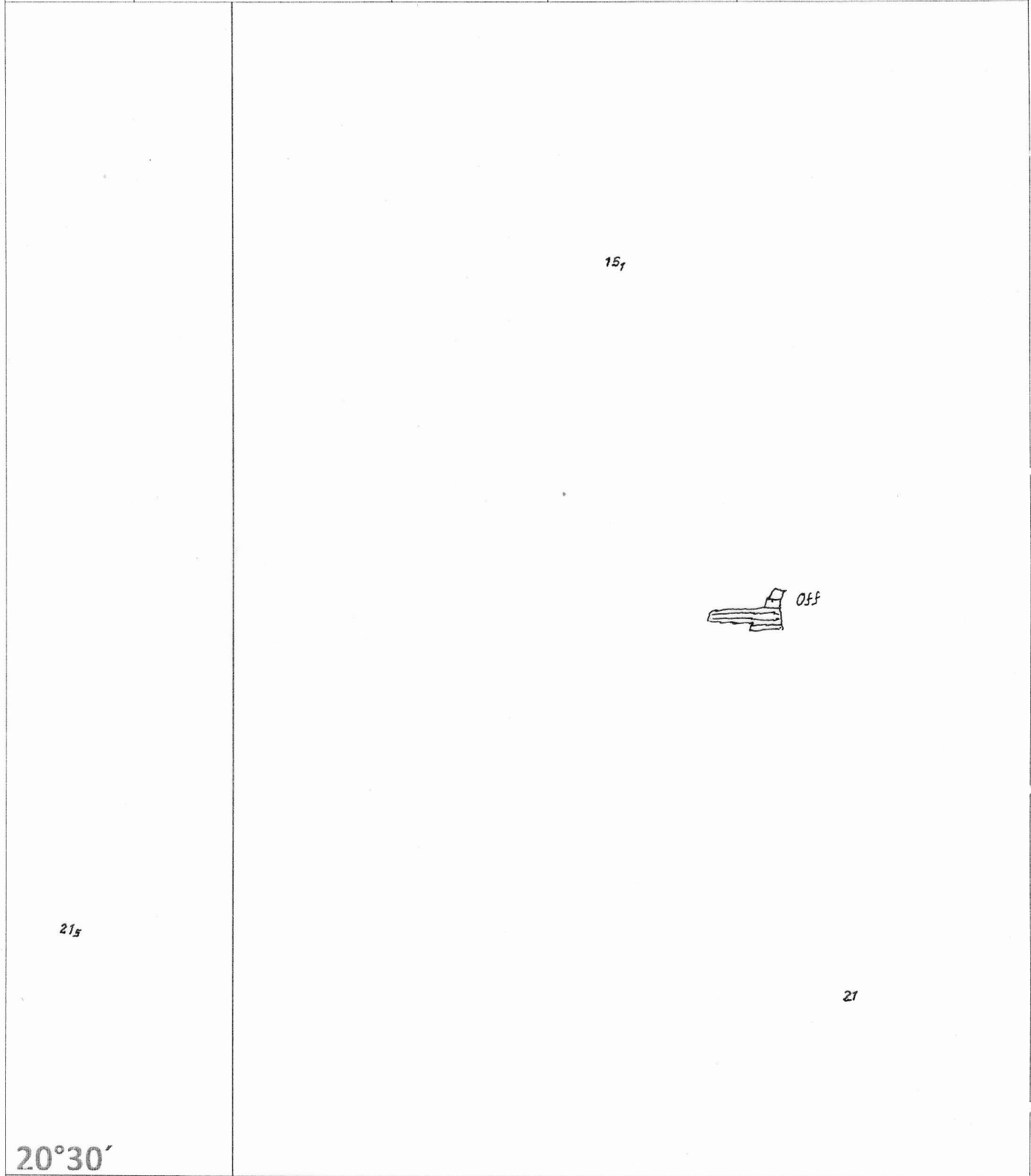


CAUTION: TRACINGS ARE NOT TO SCALE,
FOR VISUAL APPRECIATION ONLY.


Folio 02	NM 094 /16 PREVIOUS UPDATE 123/15		NE / NE 31 MAY 12	Chart No. 207
-------------	---	---	----------------------	------------------

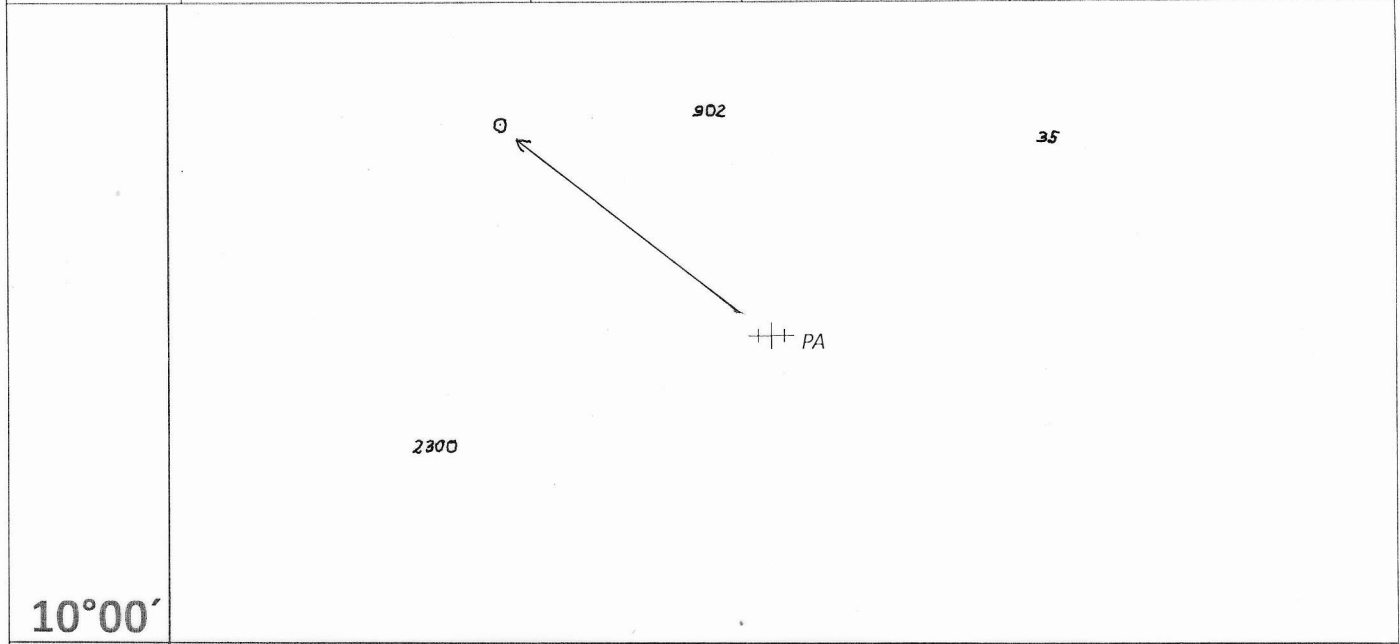


71° 30'

Folio 02	NM 094/16 PREVIOUS UPDATE 083/16		NC / NE 30 SEP 05	Chart No. 254 (INT 7331)
20°30'			<p style="text-align: center;">20₁</p> <p style="text-align: center;">20₄</p>	
71°30'	<p style="text-align: center;">23</p>			

Caution: Some computer printers might distort the tracings. Users are advised to check and, if necessary, adjust settings on their printers.


Folio 03	NM 095 /16		NC / NE	Chart No.
	PREVIOUS UPDATE 081/15		29 FEB 04	22 (INT 752)

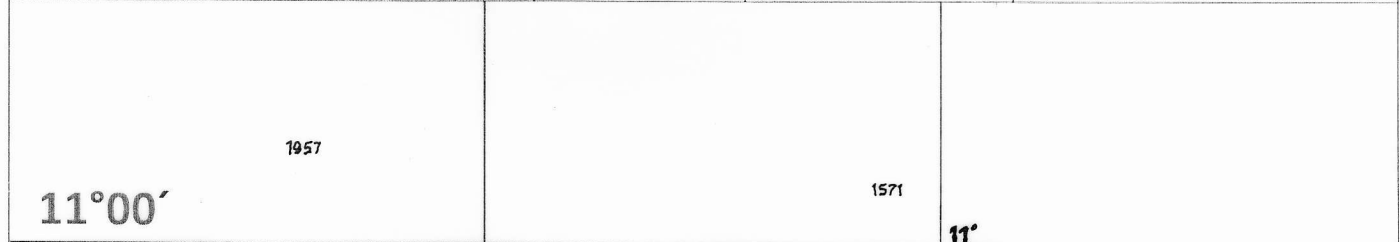


10°00'

74° 00'

Caution: Some computer printers might distort the tracings. Users are advised to check and if necessary, adjust settings on their printers.

Folio 03	NM 095 /16		NC / NE	Chart No.
	PREVIOUS UPDATE 040/14		31 DEC 83	273




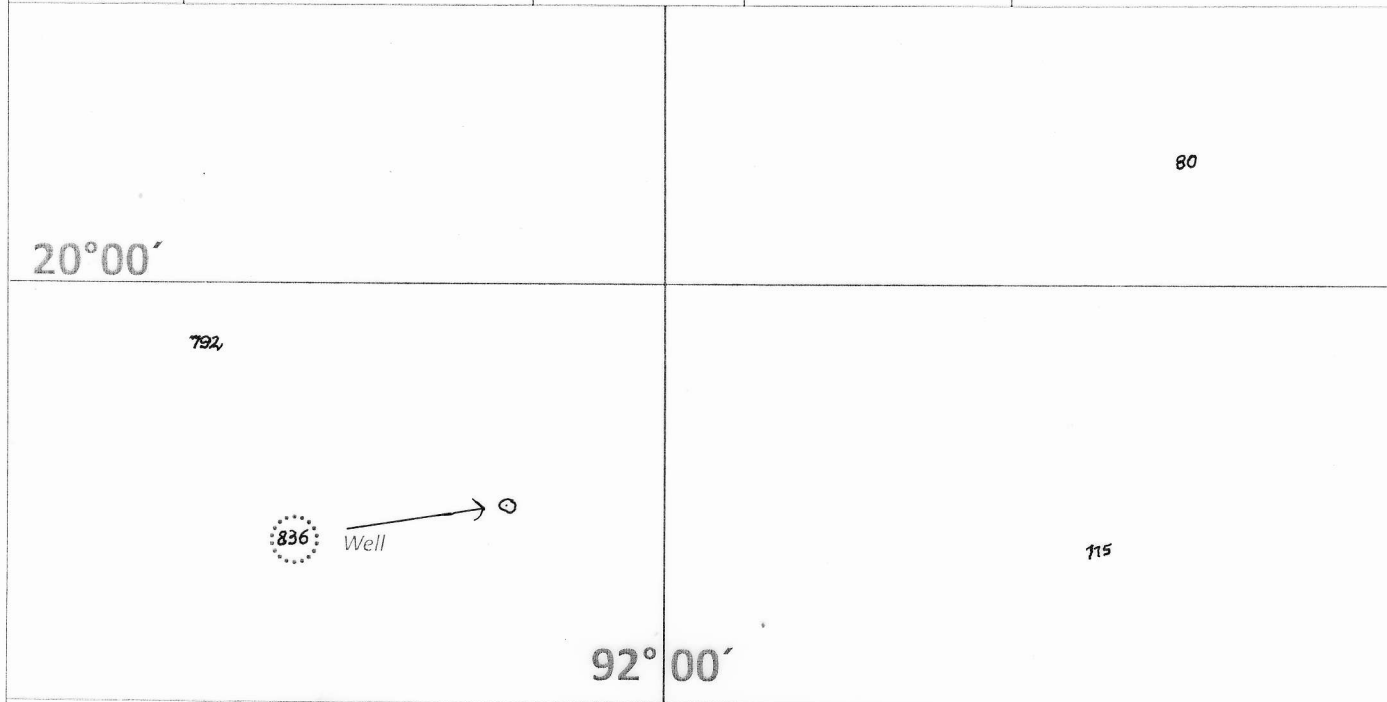
11°00'

74° 30'

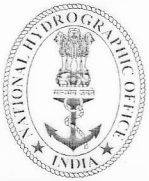
11'

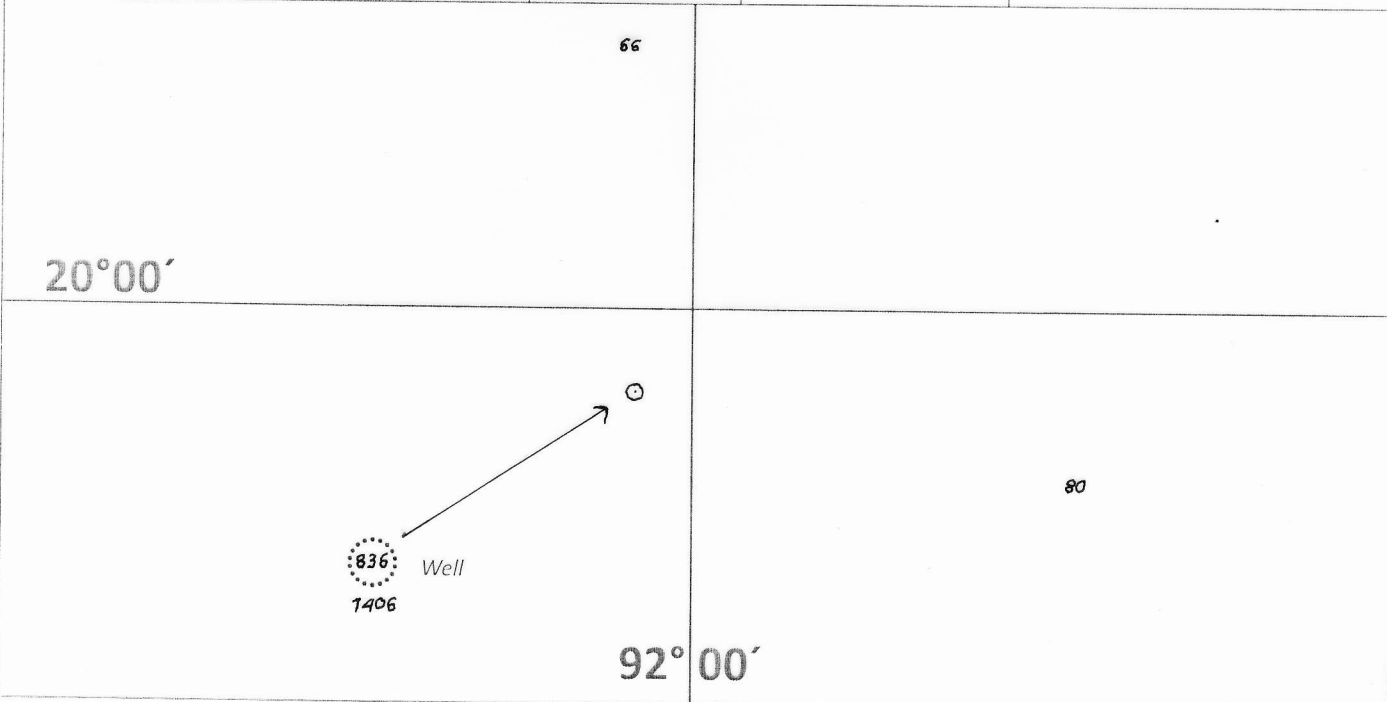
Caution: Some computer printers might distort the tracings. Users are advised to check and if necessary, adjust settings on their printers.

Folio 07	NM 096 /16		NC / NE	Chart No.
	PREVIOUS UPDATE 088/16		29 MAY 86	371



Caution: Some computer printers might distort the tracings. Users are advised to check and if necessary, adjust settings on their printers.

Folio 05	NM 096 /16		NC / NE	Chart No.
	PREVIOUS UPDATE 199/15		01 NOV 76	31



Caution: Some computer printers might distort the tracings. Users are advised to check and if necessary, adjust settings on their printers.