



INDIAN NOTICES TO MARINERS



EDITION NO. 03 DATED 01 FEB 2021

(CONTAINS NOTICES 052 TO 059)

REACH US 24 x 7



inho@navy.gov.in
msis-inho@navy.gov.in



+91-135-2748373



National Hydrographic Office
107-A, Rajpur Road
Dehradun – 248001
INDIA



Commander (H)
Maritime Safety Information Services
+91- 135 - 2746290-117

WWW

www.hydrobharat.gov.in

CONTENTS

<u>Section No.</u>	<u>Title</u>
I	List of Charts Affected
II	Permanent Notices
III	Temporary and Preliminary Notices
IV	Marine Information
V	NAVAREA VIII Warnings in force
VI	Corrections to Sailing Directions
VII	Corrections to List of Lights
VIII	Corrections to List of Radio Signals
IX	Reporting of Navigational Dangers

(PUBLISHED ON NHO WEBSITE ON 1ST & 16TH OF EVERY MONTH)

FEEDBACK: msis-inho@navy.gov.in



INSIST ON INDIAN CHARTS AND
PUBLICATIONS
Original, Authentic and Up-to-Date



© Govt. of India Copyright

No permission is required to make copies of these Notices. However, such copies are not to be commercially sold.

II

MARINER'S OBLIGATION AND A CHART MAKER'S PLEA

Observing changes at sea proactively and reporting them promptly to the concerned charting agency, is an obligation that all mariners owe to the entire maritime community towards SOLAS. Mariners are requested to notify the Chief Hydrographer to the Government of India at the above mentioned address/fax number/ E mail address immediately on discovering new or suspected dangers to navigation, changes/ defects pertaining to navigational aids, and shortcomings in Indian charts/ publications. The Hydrographic Note [Form IH – 102] is a convenient form to notify such changes. Specimen form is attached at Section IX with this notice. Also visit our website for downloading and filling up instructions for Hydrographic Note.

**Chief Hydrographer
to the Government of India**

WARNING AGAINST USE OF COUNTERFEIT PRODUCTS

All mariners are cautioned against the use of counterfeit copies of IN Charts and publications. Navigational Charts produced after 31 Oct 14 carry NHO crest as watermark on the reverse with backslip. Chart Agent's stamp is mandatory on all Charts.

Counterfeit products may have errors resulting in potential risks. The same are not approved by inspecting agencies and do not satisfy the carriage requirements of SOLAS chapter V.

Mariners are strongly advised not to use or encourage the use of counterfeit charts and publications. Failure to comply with the warning may invite legal action.

III

EXPLANATORY NOTES

Corrections to Charts and Publications. Section I comprises List of Charts affected by the notices contained in this edition. Whereas sections II and III contain information for correcting the charts and publications. Mariners should insist on corrected charts from their chart distributors/agents.

- (a) Geographical positions given are in the horizontal datum of the current edition of the chart, unless otherwise stated.
- (b) Bearings are true, reckoned clockwise from 000° to 359°. Bearings to lights are from seaward.
- (c) Symbols referred to, are those shown on the chart 5020 (INT 1).
- (d) Alterations to depth contours, deletion of depths to make way for new detail, etc; are not normally mentioned, unless they have some navigational significance.
- (e) Blocks and notes, if any, accompanying the Notices in Sections II and III are placed after Section IX.

Temporary and Preliminary Notices. These are indicated by (T) and (P) respectively after the Notice number and are placed in Section III. SI Nos. of those in force are published quarterly on 01 Jan, 01 Apr, 01 Jul and 01 Oct, and their text is published in Annual Edition of Indian Notices to Mariners. They should be inserted in pencil, by the user, on receipt.

Source of Information. A star preceding the number of a Notice indicates that the notice is promulgated by INHO based on original information received.

Sailing Directions. Corrections for the Sailing Directions (Pilots) are given in Section VI.

Lights. Corrections to Indian List of Lights are given in Section VII, where affected Light List number is quoted.

- (a) These corrections should be incorporated as per instructions given on page XI of the List of Lights.
- (b) Such correction notices to list of lights may be published in either an earlier or a later Edition of N to M than the Edition containing the Notice to the chart correction.
- (c) The range of a light given is its nominal range. Its geographical range is given in parenthesis only if it is less than the nominal range.
- (d) A star indicates that the corresponding field is to be amended and all stars indicate that new light is to be inserted.

Radio Signals. The corrections in Section VIII should be cut and pasted in the appropriate volume of the List of Radio Signals.

Radio Navigational Warnings.

- (a) These are broadcast as serially numbered NAVAREA warnings by the concerned NAVAREA coordinator through GMDSS and Area Radio Broadcasts.
- (b) They contain important information affecting navigational safety, which cannot await the publication of the next edition of N to M.
- (c) It should be borne in mind that they may be based on reports which cannot always be verified before promulgation.
- (d) It is therefore necessary to be selective, and promulgate only the more important warnings to avoid over loading users; the less important information is included in the forthcoming edition of N to M or the Chart/publication concerned.

IV

Laws and Regulations. While in the interest of the safety of shipping, the Hydrographic Office makes every endeavor to include in its publications details of the laws and regulations of all countries pertaining to navigation, it must be clearly understood: -

- (a) That no liability whatsoever can be accepted for failure to publish details of any particular law or regulation and
- (b) That publication of details of a law or regulation is solely for the safety and convenience of shipping and implies no recognition of the International validity of the law or regulation.

Correction of Charts and Publications by the Users. Notices to Mariners contain important information concerning safety of navigation at sea, hence, they should be used to keep the specified charts and publications up-to-date.

Reliance on Charts and Associated Publications. While every effort is made by the Hydrographic Office to ensure the accuracy of the information on Charts and Publications before they are published, it should be appreciated that it may not always be complete and up-to-date. The mariner must be the final judge for the reliance he can place on the information available, bearing in mind his particular circumstances, local pilotage guidance and judicious use of available navigational aids.

Use of Global Positioning System (WGS 84) positions.

- (a) The positions of hydrographic objects shown on some of the Indian charts and publications are in Everest datum. However, the positions of vessels obtained from Global Positioning System (GPS) are on World Geodetic System 1984 datum. There will always exist a difference in the position values obtained by visual fixing (Everest Datum) and GPS position (WGS 84 datum).
- (b) Wherever these differences have been ascertained, their average values are published as a Cautionary Note on the chart concerned, as shifts in Latitude and Longitude. Whilst plotting GPS positions on charts, the shift values as given on the chart must be applied, before making any assessment of the navigational situation vis-à-vis the other charted information.
- (c) These datum shift values are not uniform, particularly in areas off Andaman and Nicobar and Lakshadweep Islands, as these places are not linked to mainland network (Everest datum). Mariners are advised to use alternate source of position information such as Visual or Radar, particularly when closing the shore or navigating in the vicinity of dangers.

Source Data on Charts. All Indian charts contain specific information on their source of hydrographic data. In areas where the source data is very old, incomplete and less reliable, the mariner must use such charts with prudence. Mariner should always use the largest scale charts available for the area. Apart from being the most detailed, the larger scale charts are usually corrected first. Hydrographic information may be sparse on small scale charts. On such charts, a charted shoal may be in error as regards position, least depth and extent. Uncharted dangers may also exist, particularly in areas away from well-established routes. Mariners must exercise due caution.

Further Guidance. The Mariner's Hand Book (NP 100) gives full explanation on the use of charts and the type of information contained on charts. In their own interest, all users of charts should refer to it.

NEWLY PUBLISHED INDIAN CHARTS, ENC'S AND PUBLICATION

1. The new Indian Chart that is available for mariners in the market is as follows:-

<i>Chart No.</i>	<i>Date of Publication</i>	<i>Title, Limits & Description</i>	<i>Scale</i>	<i>Folio</i>	<i>Price</i>
3042	31-10-2020	APPROACHES TO KAKINADA LIMIT 16° 48'.50N; 82° 13'.60E. 17° 06'.00N; 82° 41'.00E.	50,000	5	Rs. 1950.00

2. The new edition Indian Chart that is available for mariners in the market is as follows:-

<i>Chart No.</i>	<i>Date of Publication</i>	<i>Title, Limits & Description</i>	<i>Scale</i>	<i>Folio</i>	<i>Price</i>
2047	15-11-2020	AMINI ISLAND LIMIT 10° 59'.00N; 72° 35'.50E. 11° 10'.00N; 72° 45'.00E.	40,000	4	Rs. 1950.00
		KADMAT ISLAND LIMIT 11° 09'.40N; 72° 44'.00E. 11° 16'.33N; 72° 48'.10E.	25,000		
		KALPITTI TO PARALI ISLAND LIMIT 10° 46'.00N; 72° 06'.00E. 11° 00'.00N; 72° 23'.20E.	50,000		
		CETLAT ISLAND LIMIT 11° 39'.70N; 72° 41'.60E. 11° 42'.90N; 72° 44'.00E.	35,000		

3. The Indian Charts that are permanently withdrawn are as follows:-

<i>Chart No.</i>	<i>Date of Publication</i>	<i>Title</i>	<i>On Publication of New Chart/ Edition</i>	<i>Date of Publication</i>
2047	31-07-2015	AMINI ISLAND	2047	15-11-2020
		KADMAT ISLAND		
		KALPITTI TO PARALI ISLAND		
		CETLAT ISLAND		
3042	15-09-2018	APPROACHES TO KAKINADA	3042	31-10-2020

VI

4. The new Indian Electronic Navigational Chart that is available for mariners in the market is as follows:-

<i>ENC Cell Name</i>	<i>Chart No.</i>	<i>Title</i>	<i>Issue Date</i>
IN43042B	3042	APPROACHES TO KAKINADA	28-01-2021

5. The new edition Indian Electronic Navigational Charts that are available for mariners in the market are as follows:-

<i>ENC Cell Name</i>	<i>Chart No.</i>	<i>Title</i>	<i>Issue Date</i>
IN42047D	2047	KALPITTI TO PARALI ISLAND	27-01-2021
IN52047E	2047	CHETLAT ISLAND	27-01-2021
IN43001A	3001	APPROACHES TO CHENNAI	27-01-2021

6. The Indian Electronic Navigational Charts that are permanently withdrawn are as follows:-

<i>ENC Cell Name</i>	<i>Chart No.</i>	<i>Title</i>	<i>Issue Date</i>
IN42047D	2047	KALPITTI TO PARALI ISLAND	10-08-2015
IN52047E	2047	CHETLAT ISLAND	12-08-2015
IN43001A	3001	APPROACHES TO CHENNAI	12-11-2018
IN43042A	3042	APPROACHES TO KAKINADA	24-10-2018

7. The forthcoming Indian Charts are as follows:-

<i>Chart No</i>	<i>Title</i>	<i>Scale</i>	<i>Remarks</i>
293	MUMBAI TO KARWAR	7,50,000	New Chart
294	KARWAR TO BAYPORE	7,50,000	New Chart
2531	RODRIGUES ISLAND	50,000	New Chart
3010	PARADIP PORT	12,500	New Edition
4103	TEMPLE SOUND	25,000	New Chart

Availability of ENCs

The complete folios of Official Indian ENCs are distributed worldwide through JEPPESEN MARINE (formerly C-MAP), UKHO and Norwegian Hydrographic Service. UKHO distributes Indian ENCs through the world wide network of their agents and distributors. Updates are also made available as per the existing policy of the distributor. Mariners and other ENC users may contact the under mentioned for further details:

United Kingdom Hydrographic Office Admiralty Way, Taunton, Somerset TA1 2DN, UK Tel: +44 (0) 1823 337900 Fax: +44 (0) 1823 330561, 1823 284077 Web site: www.hydro.gov.uk	Navico Norway AS Elganeveien 1, 4370 Egersund, Norway Ph: +47 51 464700, +91 2262233326 Mob: +91 9820238542 Fax: +47 51 464701, +91 2267939504 Email: enc@c-map.com , info@c-map.co.no Website: www.c-map.com
M/s Primar Norwegian Hydrographic Service, Postbox 60, 4001 Stavanger Norway Telephone - +47 - 51 85 87 00 Fax - + 47 - 51 85 87 08 E-mail: data@ecc.no Website: - www.primar.org	M/s IIC Technologies Limited B-2-350/5/B-22, Road No. 3 Banjara Hills Hyderabad - 500 034 Telangana Tel:+91 4039144444 Fax: +91 4039144455 Email: somnath.marthi@iictechnologies.com Web: www.iictechnologies.com

SECTION – I

The list of charts affected by the Notices 052 to 059 contained in this edition is as follows:-

CHART NUMBER	FOLIO NO.	NOTICE NO.
21	2	058 (T)
22 (INT 752)	3	054, 058 (T)
31 (INT 756)	5	057 (T), 059 (T)
32 (INT 754)	5	059 (T)
33 (INT 755)	5	059 (T)
41 (INT 757)	6	057 (T), 059 (T)
202	2	055 (T)
210	3	055 (T)
211	3	055 (T)
251 (INT 7318)	2	055 (T)
253 (INT 7328)	2	055 (T)
254 (INT 7331)	3	055 (T)
255 (INT 7334)	3	055 (T)
256 (INT 7340)	3	055 (T)
258 (INT 7348)	4	053
268 (INT 7353)	4	058 (T)
271	2	055 (T)
272	4	053
273	4	058 (T)
292 (INT 7021)	2	055 (T), 058 (T)
293 (INT 7022)	3	055 (T)
313	5	059 (T)
354 (INT 7408)	5	054, 056 (T)
355 (INT 7405)	5	056 (T)
356 (INT 7400)	5	059 (T)
357 (INT 7397)	5	059 (T)
391	5	056 (T), 059 (T)
404 (INT 7439)	6	059 (T)
405 (INT 7440)	6	059 (T)
472 (INT 7032)	6	059 (T)
473 (INT 7031)	6	059 (T)
2047	4	058 (T)
3001 (INT 7402)	5	052, 059 (T)
3004 (INT 7403)	5	059 (T)
3042	5	056 (T)
4115	6	059 (T)
7703 (INT 703)	1	058 (T)
7705 (INT 705)	1	058 (T)

SECTION – II**PERMANENT NOTICES*****052 (03/21) INDIA–EAST COAST – Approaches to Chennai – Accompanying Block.**

Source: NHO, Dehradun.

Chart 3001 (INT 7402) [previous update 112/20]

Insert accompanying block, centered on;

13° 18′·39N., 080° 21′·81E.

***053 (03/21) ARABIAN AND LAKSHADWEEP SEAS – Cora Divh to Elikalpeni Bank – Accompanying Note and Legend.**

Source: NHO, Dehradun.

Chart 272 [previous update 220/20]

Substitute legend, “Kannur” for “Kunnur”, centered on;

13° 25′·50N., 074° 54′·70E.

Chart 258 (INT 7348) [previous update 118/20]

Substitute legend, “Kannur” for “Kunnur”, centered on;

13° 23′·03N., 075° 13′·74E.

*054 (03/21)	Miscellaneous updates to charts.	
Source: NHO Dehradun.		
Chart No.	Previous Updates	Details
22 (INT 752)	044/21	Insert Chart No. 272 and Magenta limit as follows: 11° 04′·30N., 71° 14′·00E. 14° 01′·30N., 71° 14′·00E. 14° 01′·30N., 75° 50′·00E. 11° 04′·30N., 75° 50′·00E. 11° 04′·30N., 71° 14′·00E.
22 (INT 752)	044/21	Insert Chart No. 273 and Magenta limit as follows: 06° 43′·00N., 71° 46′·30E. 11° 17′·30N., 71° 46′·30E. 11° 17′·30N., 74° 46′·30E. 06° 43′·00N., 74° 46′·30E. 06° 43′·00N., 71° 46′·30E.
354 (INT 7408)	209/20	Insert Chart No. 3042 and Magenta limit as follows: 16° 48′·50N., 82° 13′·60E. 17° 06′·00N., 82° 13′·60E. 17° 06′·00N., 82° 41′·00E. 16° 48′·50N., 82° 41′·00E. 16° 48′·50N., 82° 13′·60E.
		Delete Chart No. 3042 and Magenta limit as follows: 16° 48′·50N., 82° 12′·50E. 17° 14′·00N., 82° 12′·50E. 17° 14′·00N., 82° 32′·00E. 16° 48′·50N., 82° 32′·00E. 16° 48′·50N., 82° 12′·50E.

Section – III**TEMPORARY AND PRELIMINARY NOTICES**

***055(T) (03/21) INDIA – WEST COAST – Arabian Sea – Oil Rigs.**

Source: NCD, Mumbai.

1. List of Oil Rigs is as follows:-

Rig Name	Position
Aban III	18° 18'.64N., 72° 21'.82E.
Aban IV	19° 27'.80N., 71° 16'.83E.
CE Thornton	19° 17'.47N., 71° 03'.32E.
Discovery 1	20° 21'.52N., 72° 01'.44E.
DS Fortune	19° 12'.87N., 72° 06'.78E.
DS Fossil	20° 11'.52N., 71° 52'.25E.
FG Mclintok	19° 15'.33N., 71° 21'.79E.
Foresight Driller IX	18° 55'.88N., 72° 18'.31E.
Great Drill Chaaya	18° 32'.95N., 72° 15'.97E.
Great Drill Chaaru	19° 36'.38N., 71° 47'.81E.
Great Drill Chetna	22° 33'.31N., 68° 26'.35E.
Great Drill Chitra	19° 14'.44N., 70° 58'.88E.
Harvey H Ward	18° 55'.81N., 72° 00'.92E.
Jindal Explorer	18° 38'.20N., 71° 00'.92E.
Jindal Star	19° 34'.26N., 71° 49'.95E.
Jindal Supreme	18° 05'.67N., 72° 24'.39E.
JT Angel	19° 36'.62N., 71° 22'.90E.
Parameswara	20° 06'.74N., 71° 42'.27E.
Ron Tappmeyer	18° 08'.15N., 72° 25'.28E.
Sagar Bhushan	19° 25'.20N., 71° 41'.10E.
Sagar Gaurav	19° 22'.48N., 71° 21'.59E.
Sagar Jyoti	19° 01'.68N., 72° 21'.87E.
Sagar Kiran	19° 14'.90N., 72° 04'.05E.
Sagar Ratna	19° 23'.54N., 71° 48'.27E.
Sagar Shakti	19° 25'.22N., 71° 24'.97E.
Trident 2	19° 06'.08N., 70° 56'.43E.
Trident 12	19° 01'.60N., 71° 21'.84E.
Valiant Driller	19° 23'.99N., 71° 15'.33E.
Victory Driller	19° 32'.13N., 71° 18'.81E.
Vivekananda 1	18° 55'.59N., 72° 02'.48E.
Vivekananda 2	20° 13'.31N., 71° 54'.79E.
Virtue 1	18° 13'.22N., 72° 20'.24E.

2. All vessels operating in vicinity are to maintain a clearance of 01 NM off the oil rigs.

3. All positions referred to WGS 84 datum.

Charts Affected – 292 (INT 7021) – 293 (INT 7022) – 271 – 251 (INT 7318) – 253 (INT 7328) – 254 (INT 7331) – 255 (INT 7334) – 256 (INT 7340) – 210 – 211 – 202.

Former INTM 049 (T)/21 is cancelled.

***056(T) (03/21) INDIA – EAST COAST – Bay of Bengal – Oil Rigs.**

Source: NCD, Mumbai.

1. List of Oil Rigs is as follows:-

Rig Name	Position
Deep Driller 8	16° 40'·13N., 82° 25'·73E.
DDKG 1	16° 31'·69N., 82° 35'·90E.
SSV Louisiana	16° 19'·70N., 82° 25'·70E.
Olinda Star	16° 18'·35N., 82° 18'·59E.
Platinum Explorer	15° 08'·82N., 82° 07'·28E.

2. All vessels operating in vicinity are to maintain a clearance of 01 NM off the oil rigs.

3. All positions referred to WGS 84 datum.

Charts Affected – 391 – 354 (INT 7408) – 355 (INT 7405) – 3042.*Former INTM 050(T)/21 is cancelled.****057(T) (03/21) INDIAN OCEAN - Bay of Bengal – Northern Portion (Krishnapatnam to Bassein River) – Drilling Operation.**

Source: Myanmar Notice 02/2021.

1. Drilling operation will be carried out by Jack-Up Drilling Rig **COSL BOSS** (Call Sign: **9V5684**) till **30 June 2021** in the following coordinates:-

Wells Platform	Position
WP 2 Platform	15° 09'·16N., 94° 46'·86E.
WP 2 Platform	15° 09'·62N., 94° 43'·05E.

2. During the drilling operation period anchoring, fishing and trawling are prohibited within 5 NM from the above mentioned positions..

3. Mariners are advised to navigate with caution.

Charts affected – 41 (INT 757) – 31 (INT 756).***058(T) (03/21) INDIA – WEST COAST – Arabian Sea – Data Buoys and Tsunami Buoy.**

Source: NIOT, Chennai.

1. Following yellow colour data buoys characteristics FL(4)15s4M, 3m diameter and 3.5m height mast with radar reflector & mast carrying sensor laid in following positions:-

Buoy No./Name	Position	Charts affected
AD06/OB	18° 24'·48N., 67° 28'·17E.	21, 292 (INT 7021)
AD07/OB	14° 56'·02N., 68° 59'·17E.	7705 (INT 705)
AD08/OB	12° 04'·08N., 68° 37'·62E.	7703 (INT 703), 7705 (INT 705)
AD09/OB	08° 10'·00N., 73° 15'·00E.	22 (INT 752), 273
AD10/OB	10° 19'·13N., 72° 35'·52E.	22 (INT 752), 273, 268 (INT 7353)
CALVAL/MB	10° 36'·05N., 72° 17'·07E.	22 (INT 752), 273, 268 (INT 7353)
CB02/CB	10° 52'·43N., 72° 12'·60E.	22 (INT 752), 268 (INT 7353), 273, 2047
TB12/TB	19° 53'·23N., 68° 58'·73E	21, 292 (INT 7021)
STB02/TB	20° 45'·60N., 65° 16'·80E	21

2. All vessels operating in vicinity are to maintain a clearance of 01 NM off the moored buoys.

3. All positions are in WGS 84 datum.

Former INTM 233(T)/20 is cancelled.

***059(T) (03/21) INDIA – EAST COAST – Bay of Bengal – Andaman Sea – Data Buoys and Tsunami Buoys.**

Source: NIOT, Chennai.

1. Following yellow colour data buoys characteristics FL(4)15s4M, 3m diameter and 3.5m height mast with radar reflector & mast carrying sensor laid in following positions:-

Buoy No./Name	Position	Chart Affected
BD08/OB	17° 49'·12N., 89° 13'·98E	31(INT 756)
BD10/OB	16° 21'·62N., 87° 59'·42E	31(INT 756)
BD11/OB	13° 31'·52N., 84° 10'·00E	32 (INT 754), 33 (INT 755), 391
BD12/OB	10° 31'·25N., 94° 05'·15E	41 (INT 757), 472 (INT 7032)
BD13/OB	13° 59'·25N., 86° 58'·92E	33 (INT 755)
BD14/OB	06° 33'·93N., 88° 21'·30E	33 (INT 755)
CB01/CB	11° 35'·33N., 92° 35'·77E	33 (INT 755), 41 (INT 757), 473 (INT 7031), 404 (INT 7439), 405 (INT 7440), 4115
CB06/CB	13° 06'·08N., 80° 18'·93E	32 (INT 754), 33 (INT 755), 356 (INT 7400), 357 (INT 7397), 391, 313, 3001 (INT 7402), 3004 (INT 7403)
TB09/TB	17° 04'·30N., 90° 00'·23E	31(INT 756)
TB05/TB	10° 10'·00N., 88° 29'·88E	33 (INT 755)
STB05/TB	13° 28'·20N., 88° 59'·40E	33 (INT 755)

2. All vessels operating in vicinity are to maintain a clearance of 01 NM off the moored buoys.

3. All positions are in WGS 84 datum.

Former INTM 214(T)/20 is cancelled.



SECTION – IV

MARINE INFORMATION

1. NAVTEX TRANSMISSION

Status of MSI Promulgation by NAVTEX Stations is as follows:-
Mauritius (Cassis) - Operational
Seychelles (Mahe) - Operational

Following new Navtex stations along the Indian coast have commenced operations:-

INTERNATIONAL NATIONAL NAVTEX FREQUENCY - 518 kHz								
Sl.	Station Name	BI	Broad Cast Timings in UTC					
(a)	Veraval	H	0110	0510	0910	1310	1710	2110
(b)	Vengurla Point	J	0130	0530	0930	1330	1730	2130
(c)	Muttam Point	L	0150	0550	0950	1350	1750	2150
(d)	Porto Novo	O	0220	0620	1020	1420	1820	2220
(e)	Vakalpudi	Q	0240	0640	1040	1440	1840	2240
(f)	Balasore	S	0300	0700	1100	1500	1900	2300
(g)	Keating Point	V	0330	0730	1130	1530	1930	2330

2. MISIDENTIFYING FISHING BOATS AS PIRATE SKIFFS

All merchant vessels entering Indian EEZ are advised that dense fishing activity may be encountered off West Coast of India. Fishing is generally carried out by mechanized boats and single hull boats with outboard motors carrying 4-5 crews using long lines upto 50 NM from coast. The vessels traversing the nets are likely to be approached by fishing boats for safeguarding nets and lines and should not be mistaken as skiffs and PAG's. Masters of vessels to report any suspicious activity of fishing vessels immediately to MRCC (Mumbai) on telephone +91-22-24388065, 24316558, Email: - mrcc-west@indiancoastguard.nic.in. Any suspicious activity of skiffs/ boats to be photographed if possible. Merchant vessels with armed guards on board are to report presence of guards to Indian Navy/Coast Guard while transiting Indian EEZ.

3. DISPLAY ANOMALIES IN ECDIS

(a) Mariners are advised that the International Hydrographic Organization (IHO) check data set shows that some ECDIS systems fail to display some significant underwater features in the standard display mode. The use of this check data set, issued through ENC service providers and available from the IHO website www.iho.int, to check the operation of ECDIS is strongly recommended. JRC has confirmed that certain versions of JRC ECDIS fail to display some types of wreck and obstructions, including stranded wrecks, in any display mode.

Where JRC ECDIS is in use, paper charts should be the primary means of navigation until the ECDIS has been proved to operate correctly. See www.jrc.co.jp/eng/product/marine/whatsnew/20120313/index.html for further information.

(b) Some Electronic Chart Display and Information Systems (ECDIS) may exhibit operating anomalies. The International Maritime Organization's (IMO) circular SN.1/CIRC.312 pages /imodocs.aspx (registration required) lists identified anomalies, Their characteristics and remedial advice. Mariners are reminded that they should access the International Hydrographic Organization (IHO) data presentation and performance check (DPPC) dataset (news links of <http://www.iho.int/srv1>) and ensure that all installed ECDIS units are checked.

4. **SAFETY FAIRWAYS, RECOMMENDED ROUTES, TRAFFIC SEPARATION SCHEME**

The Director General Shipping has established Safety fairways, recommended routes and traffic separation scheme (TSS) in restricted Indian waters including the offshore development area to enhance safety of navigation. The details of coordinates are published in the fortnightly Indian Notices to Mariners.

- (a) Safety Fairways: An area within which permits are not granted for the erection of oil or gas related structures. The use of a safety fairway is not usually mandatory, but is recommended. Safety fairways have been promulgated in and round offshore development area in Arabian Sea up to the Exclusive Economic Zone (EEZ) due to increased weather related marine accidents and dense traffic. These are mandatory for all Indian ships and vessels transiting through the ODA and recommendatory for all foreign flag ships and vessels irrespective of size.
- (b) Traffic Separation Schemes (TSS). The TSS is mandatory for all Indian and foreign flag ships and vessels entering and leaving.

5. **GAGAN SYSTEM COMMISSIONED FOR OPERATIONS**

The GAGAN System is now commissioned for safety of life, civil aviation, and en- route operations in addition to all other non-aviation applications. The GAGAN signal is being broadcasted through GSAT-8 and GSAT-10 with PRN127& 128 respectively.

All the GPS users are requested to enable SBAS functionality in their receivers, configure it to receive PRN-127& 128 and avail the benefits of GAGAN in terms of increased accuracy and reliability. There may be occasional signal outages due to system up-gradation activities.

6. **USAGE OF THURAYA/ IRIDIUM AND SATELLITE PHONE**

The use of Thuraya, Iridium and other such satellite phone is banned in India under Sec 6 of Indian Wireless Act and Sec 20 of Indian Telegraph Act. It is intimated to all shipping companies/ shipping agents that use of Thuraya/ Iridium and other such satellite phones are banned in Indian waters and seafarers should not use the same.

Satellite phones can be used only after no objections certificate issued by department of telecommunication (DOT) on a case to case basis. The shipping agents should mandatorily intimate the details of person carrying Thuraya and the particulars of Thuraya, Iridium and other such sets in pre arrival notification on security (PANS).

The unauthorized holders of Thuraya/ Iridium and other such Satellite phones can be prosecuted under Sec 6 of Indian Wireless Act and Sec 20 of Indian Telegraph Act.

7. **CAUTIONARY NOTE**

There is a finite amount of lag between publication of large and small scale Indian Nautical Charts. To avoid uncertainty the mariners are advised to use large scale charts for coastal navigation wherever applicable and available. In addition, mariners are to refer large scale charts in conjunction with small scale charts in areas where both overlap during both planning and conduct of passage.

8. **ADVISORY FOR ALL VESSELS NAVIGATING INDIAN WATERS**

- (a) All vessels navigating in Indian waters are cautioned to keep a sharp look-out for fishing vessels and small crafts, as there have been several incidents of collisions with such vessels in the past resulting in loss of innocent lives as well as damage to property.
- (b) It is further cautioned that all vessels need to exercise extreme care while navigating during hours of darkness as such vessels are generally of primitive built (wood/fibre/etc) due to which it may not be detected on ship's radar, especially during adverse weather conditions. Also, such vessels may not be properly lit, or sometimes, only one vessel may be lit among multiple vessels in a cluster.
- (c) The general areas of concern on the west coast of India are the areas of convergence and divergence of traffic, mainly between Mangalore to Kanyakumari (Cape Comorin). Further, in these areas, additional caution needs to be exercised and wide berth be given to all such vessels.

(d) All fishing vessels are also cautioned to avoid fishing in areas having high density traffic. All fishing vessels are also required to always maintain proper lookout by sight, hearing and by all available means and comply with all applicable provisions of Collision Regulations.



List of Indian Chart Agents

<p>OSA Books and Periodicals R-246, Greater Kailash –I, New Delhi - 110 048 Tel/Fax: +91-11-26418643, 46557337, Mob: 9971093992 Email: rpani246@gmail.com</p>	<p>M/s VDO Marine Instruments Shanghar Building, PO Bag No – 645, 45/271, Corner of Bristow & Naval Road, Willingdon Island, Kochi – 682 003 Tel: +91 484 2667157 Fax: +91 484 2667121 Email: atmain@md4.vsnl.net.in</p>
<p>M/s Global Charts & Nav. Aids Pvt. Limited 1A, Goa Mansion, Ground Floor, 58, Dr. SunderlalBahl Path (Goa Street), Fort, Mumbai - 400 001 Tel: 91-22-22626318, 22626380 Fax: 91-22-22621488 Email: sales@globalcharts.in Web: www.globalcharts.com.sg</p>	<p>SMS Marine Private Ltd 505, Raheja Arcade, Sector 11, CBD Belapur, Navi Mumbai – 400 614 Tel: +91-22-62233326, Fax: 022-67939504 Mobile: +91 9820 238 542 Email: info@c-map.co.in , raj.chakravorty@smsmap.com Web: www.smsmaps.co.in</p>
<p>M/s C & C Marine Combine 25 Bank Street, 1st Floor, Fort Mumbai - 400 023 Tel: 91-22- 22660017/0018/0525/1937 Ext: 32 Tel: 91-22-22672143 Fax: 91-22-22670896 Email: vijay@ccmarine.in, sales@ccmarine.in</p>	<p>M/s Global Marine Infratech Pvt. Ltd. SikshaSandan, Ground Floor, Plot No. ND7, VIP Area, IRC Village, Bhubaneswar – 751015 Tel: +91-674-2550599, Fax: +91-674-2551899 Cell:- +91-9337477799, 7077702499 Email: tusarkantha@gmiindia.in Web: www.gmiindia.in</p>
<p>M/s JM Maritime Services 24/24C Kavarana Building, Ground Floor, WadiBunder, P.D. Mellow Road, Mumbai – 400 009 Tel: +91 22 23736956, Fax: 022 - 23725083 Cell: +91 9820788357 Email : jmms@mtnl.net.in , charts@mtnl.net.in</p>	<p>L. R. Marine Services 301, 3rd Floor, Biry House, 265, PerinNariman Street, Fort, Mumbai - 400 001. Tel: +91-22-2269 1535, Fax: +91-22-66359148 Cell No: +91 8108926880/ +91 98214 60258 Email: lrcharts@gmail.com, lrmarine@live.com</p>
<p>M/s Lift o Marine Allen’s Mansion, C6, Nungi Station Road, Bata Nagar, Kolkata – 700 140 Tel: +91 9836972027 Fax: 033 24924283 Email: sankar@liftomarine.org, liftomarine77@gmail.com Web: www.liftomarine.org</p>	<p>HC Technologies Limited 8-2-350/5/B-22, Road No. 3, Banjara Hills, Hyderabad – 500 034, Telangana Tel: +91 40 39144444 Fax: +91 40 39144455 Email: somnath.marthi@iictechnologies.com Web: www.iictechnologies.com</p>
<p>M/s Zenith Surveys (I) Pvt. Ltd. Lakhani’sPlam View, First Floor, Office No. 889, Sector 48, Nerul, Navi Mumbai – 400 706 Tel/ Fax: +91-22- 27708011 Email: zenithsurveys703@gmail.com nyvmane@yahoo.com Web: www.zenithsurvey.com</p>	

SECTION – V**NAVAREA – VIII WARNINGS IN FORCE**

1. For details of NAVAREA limits and organisation/ coordination, please refer to Notice No. 12 of the Special edition of Indian Notice to Mariners – 2020.

2. NAVAREA VIII Warnings in force as on 31 Jan 21:-

<u>2020 SERIES</u> - 116 329 333 384 385 442 444 480 515 526 593 630 664 690 691 751 753 757 774 786 794
<u>2021 SERIES</u> - 016 017 021 025 030 033 038 047 055 057 058 061 066 067 070 075 079 080 082 086 088 092 093 094 095 096 097 098 099 101 102 104

3. NAVAREA VIII Warnings issued during the period from 16 Jan to 31 Jan 21 (both dates inclusive) are as tabulated below:-

050. India West Coast – off Trivandrum. Charts IN 22 222 260 261 INT 752. Rocket launch from Thumba (08-31.98N 076-52.05E) scheduled on 20 Jan 21 from 0530 to 0730 UTC. Danger sector (A) radius of 05 NM between azimuth 190 and 300 (B) radii OF 45 NM and 75 NM between azimuth 220 and 260. Wide berth from area advised. 2. Cancel this MSG 200830 UTC Jan 21.
051. Cancel NAVAREA VIII MSG 766/20, 705/20, 712/20, 797/20, 019/21, 024/21, 011/21, 045/21, 031/21 and this MSG. INTM 042/21, 044/21, 047/21, 051(T)/21, 050(T)/21, 049(T)/21 of 02/21 refers. 2. Cancel this MSG 171000 UTC Jan 21.
052. India West Coast – off Kochi. Charts IN 22 259 INT 7356. Abandoned and partially sunken blue coloured fishing boat reported adrift 10-14.32N 074-53.21E. 2. Cancel this MSG 191000 UTC Jan 21.
053. Southern Ocean. Charts IN 7070 7073 INT 70. Space debris predicted 300 NM on either side of centreline joining 27-18S 062-20E, 44-22S 086-00E, 52-00S 110-00E, 53-05S 138-38E, 50-17S 157-25E from 181544 to 181627 UTC and 191522 to 191605 UTC Jan 21. 2. Cancel this MSG 191700 UTC Jan 21.
054. Andaman Sea – off Barren. Charts IN 41 473 INT 7031. Firing by CG aircraft scheduled on 21, 22 Jan 21 from 0430 to 0930 UTC in danger area bounded within 11-50N to 12-00N and 093-40E to 094-10E. Wide berth from area advised. 2. Cancel this MSG 221030 UTC Jan 21.
055. India West Coast. Charts IN 21 255 292 INT 7334. RIG Move. Vivekanand-I (18-55.59N 072-02.48E). Refer to 049(T) of INTM 02/21. Wide berth requested.
056. India West Coast – Gulf of Khambhat. Charts IN 207 254 INT 7331. Narmada channel marking buoy 5 (20-47.9N 072-07.25E) retrieved for maintenance.
057. India West Coast – off Mumbai. Charts IN 255 292 INT 7334. Barge LTB 300 progressing hook up activities in area bounded by 19-27.98N 071-15.75E, 19-27.83N 071-27.17E, 19-17N 071-27E, 19-17.15N 071-15.6E. Wide berth requested. 2. Cancel this MSG 311830 UTC May 21.
058. India East Coast. Charts IN 31 355 391 INT 7405. RIG move. Platinum Explorer (15-08.82N 082-07.28E). Refer to 050(T) of INTM 02/21. Wide berth requested.
059. Southern Ocean. Charts IN 7070 7073 INT 70. Space debris predicted from 201501 to 201544 UTC and 211439 to 211522 UTC Jan 21 in danger area bounded by 29-43S 060-07E, 24-55S 064-27E, 38-45S 084-30E, 45-12S 099-45E, 49-46S 119-13E, 50-42S 138-19E, 48-50S 156-44E, 51-46S 158-08E, 54-42S 148-32E, 56-20S 131-03E, 55-52S 107-50E, 49-11S 085-05E, 34-32S 064-13E. 2. Cancel this MSG 211630 UTC Jan 21.
060. Cancel NAVAREA VIII MSG 056/21 and this MSG.
061. India West Coast. Charts IN 21 211 255 INT 7334. RIG move. Sagar Jyoti (19-01.68N 072-21.87E) Foresight Driller-IX (18-55.88N 072-18.31E). Refer to 049(T) of INTM 02/21. Wide berth requested.
062. India West Coast – off Daman. Charts IN 21 209 254 292 INT 7331. Aerial firing scheduled from 23 to 27 Jan 21 from 0230 to 1130 UTC in danger area bounded within 20-26N to 20-40N and 072-27E TO 072-40E. Wide berth from area advised. 2. Cancel this MSG 271230 UTC Jan 21.
063. Indian Ocean – off Reunion. Charts IN 7702 BA 712 INT 702. Gunnery exercise scheduled from 210400 UTC to 271300 UTC Jan 21 In danger area bounded by 21-12S 054-57E, 21-26S 055-02.3E, 21-39.02S 054-33.3E, 21-19.3S

<p>063. Continued. 054-25.54E. Wide berth from area advised. 2. Cancel this MSG 271400 UTC Jan 21.</p>
<p>064. India West Coast – Porbandar. Charts IN 204 2040 INT 7325. DGPS (21-37N 069-37E) transmission will be switched off from 210130 UTC to 221230 UTC Jan 21 for maintenance. 2. Cancel this MSG 221230 UTC Jan 21.</p>
<p>065. Cancel NAVAREA VIII MSG 048/21 and this MSG.</p>
<p>066. India West Coast – off Mumbai. Charts IN 211 255 292 INT 7021. Barge Falcon Chief progressing hook up activities in area bounded by 18-49.2N 072-09.49E, 18-48.81N 072-28.67E, 18-11.65N 072-27.91E, 18-18.98N 072-08.8E. Wide berth requested. 2. Cancel this MSG 211830 UTC Feb 21.</p>
<p>067. Bay of Bengal – off Great Nicobar I. Charts IN 41 471 INT 757. MT Babylon reported loss of 25 men life raft in position 06-19.5N 092-37E at 200140 UTC Jan 21.</p>
<p>068. Indian Ocean – off Diego Garcia. Charts IN 7071 7707 INT 707. Unidentified object resembling yokohama fender reported adrift 09-37.5S 075-13.7E AT 190530 UTC JAN 21. Vessels transiting to exercise caution. 2. Cancel this MSG 230530 UTC Jan 21.</p>
<p>069. Indian Ocean – off Reunion I. Charts IN 7702 BA 712 INT 702. 18 NM fishing line with 04 red GPS beacons reported adrift 21-44S 055-35E on 20 Jan 21. 2. Cancel this MSG 230700 UTC Jan 21.</p>
<p>070. India West Coast. Charts IN 21 255 292 INT 7334. RIG move. DS Fortune (19-12.87N 072-06.78E). Refer to 049(T) of INTM 02/21. Wide berth requested.</p>
<p>071. India West coast – off Mormugao. Charts IN 22 214 215 257 293 INT 7022. Firing scheduled from 250230 UTC to 271130 UTC Jan 21 in danger area bounded by 14-15N 072-52E, 14-20N 071-52E, 15-30N 071-48E, 16-09N 072-44.5E, 15-17N 073-21E . Wide berth from area advised. 2. Cancel this MSG 271230 UTC Jan 21.</p>
<p>072. India East Coast – off Balasore. Charts IN 31 351 352 3017 3037 INT 756. Firing by IAF scheduled from 25 to 30 Jan 21 from 0415 to 0730 UTC in danger area bounded by (A) 21-41N 087-44E (B) 20-57N 086-53E (C) 20-56N 086-55E (D) 21-02N 087-13E (E) 20-56N 087-16E (F) 20-47N 087-02E (G) 20-48N 086-56E (H) 20-12N 087-19E (J) 20-00N 087-59E (K) 20-35N 087-40E (L) 21-24N 087-38E. Danger area extending upto coastline joining point A and B. Wide berth from area advised. 2. Cancel this MSG 300830 UTC Jan 21.</p>
<p>073. India East Coast – off Balasore. Charts IN 31 301 351 3011 INT 7419. Firing by IAF scheduled from 25 to 30 Jan 21 from 0731 to 1045 UTC in danger area bounded by (A) 20-57N 086-54E (B) 21-41N 087-54E (C) 21-31N 087-42E (D) 21-13N 087-23E . Danger area extending upto coastline joining point A and B. Wide berth from area advised. 2. Cancel this MSG 301145 UTC Jan 21.</p>
<p>074. India West Coast – Ratnagiri. Charts IN 212 2028 INT 7022. DGPS (16-59N 073-16E) transmission will be switched off from 250330 UTC to 251330 UTC Jan 21 for maintenance 2. Cancel this MSG 251330 UTC Jan 21.</p>
<p>075. India West Coast – off Mumbai. Charts IN 21 211 255 292 INT 7021. Sea Patriot progressing hook up activities in area bounded by 18-49.2N 072-09.49E, 18-48.81N 072-28.67E, 18-11.65N 072-27.91E, 18-18.98N 072-08.8E. Wide berth requested. 2. Cancel this MSG 221830 UTC Feb 21.</p>
<p>076. Cancel NAVAREA VIII MSG 026/21 and this MSG.</p>
<p>077. NAVAREA VIII - warnings in force as on 22 Jan 2021:- 2020 Series - 116 329 333 384 385 442 444 480 515 526 593 630 664 690 691 751 753 757 774 779 783 786 792 794 798 2021 Series - 003 004 005 016 017 018 021 025 028 029 030 033 038 047 055 057 058 061 062 063 066 067 068 069 070 071 072 073 074 075 076 (A) NAVAREA VIII warnings less than 42 days promulgated via safetynet. (B) Text of NAVAREA VIII warning inforce including those which no longer broadcast available in www.hydrobharat.gov.in. 2. Cancel this MSG 291000 UTC Jan 21.</p>
<p>078. India West Coast – off Porbandar. Charts IN 202 204 205 252 271 291 292 INT 7325. Firing from Kathiawar range scheduled from 261831 UTC to 281829 UTC Jan 21 in danger area bounded by 22-12N 068-36.33E, 21-15.5N 069-04E, 21-09N 069-40E, 21-15.5N 069-42.5E, 22-05.75N 068-49E. Wide berth from area advised. 2. Cancel this MSG 281929 UTC Jan 21.</p>
<p>079. India West Coast – off Kalpeni I. Charts IN 268 273 INT 7353. MSV Messiah reported sunk in approximate position 10-04N 073-23E at 220330 UTC Jan 21.</p>
<p>080. India West Coast. Charts IN 21 255 292 INT 7334. RIG move. Trident-XII (19-01.6N 071-21.84E). Refer to 049(T) of INTM 02/21. Wide berth requested.</p>
<p>081. India West Coast – off Bhatkal. Charts IN 22 216 257 293 2356 INT 7343. Firing scheduled from 280030 UTC to 301430 UTC Jan 21 in danger area bounded within 13-56.2N to 14-07.2N and 074-13.6E to 074-25.07E. Wide berth from</p>

<p>081. Continued. Area advised. 2. Cancel this MSG 301530 UTC Jan 21.</p>
<p>082. India West Coast – off Mormugao. Charts IN 22 214 215 256 257 293 INT 752. Firing scheduled from 280230 UTC to 311630 UTC Jan 21 and 010230 UTC to 021630 UTC Feb 21 in danger area bounded by 16-30.27N 072-27.11E, 15-17N 073-21E, 14-15N 072-52E, 14-17N 071-41.35E, 15-57.4N 069-11.03E, 17-18.23N 070-36.32E. Wide berth from area advised. 2. Cancel this MSG 021730 UTC Feb 21.</p>
<p>083. India East Coast. Charts IN 31 391 7706 INT 706. Firing scheduled from (A) 291130 UTC to 291730 UTC (B) 300030 UTC to 301730 UTC (C) 310030 UTC to 311730 UTC Jan 21 in danger area bounded by 16-16.45N 084-04.04E, 14-58.86N 085-18.02E, 13-57.29N 084-12.16E, 15-03.25N 082-59.93E. Wide berth from area advised. 2. Cancel this MSG 311830 UTC Jan 21.</p>
<p>084. Andaman Sea – off Barren. Charts IN 41 473 INT 7031. Firing by CG aircraft scheduled on 28, 29 Jan 21 from 0430 to 0930 UTC in danger area bounded within 11-50N to 12-00N and 093-40E to 094-10E. Wide berth from area advised. 2. Cancel this MSG 291030 UTC Jan 21.</p>
<p>085. India West Coast – Okha. Charts IN 21 202 203 2068 INT 7319. Firing scheduled on 28 Jan 21 from 0530 to 0730 UTC in danger sector extending upto 12 NM within bearing 270 to 020 from 22-28.75N 069-04.05E. Wide berth from area advised. 2. Cancel this MSG 280830 UTC JAN 21.</p>
<p>086. India West Coast – off Daman and Mumbai. Charts IN 254 255 INT 7021. Samudra Sarvekshak progressing geotechnical investigation in vicinity of 21-04.45N 072-27.56E, 21-03.87N 072-21.4E, 20-06.42N 072-15.79E, 20-51.76N 071-58.18E, 19-13.41N 071-13.75E. Wide berth requested. 2. Cancel this MSG 261830 UTC Feb 21.</p>
<p>087. India West Coast – Okha. Charts IN 2013 2068 INT 7324. DGPS (22-28N 069-04E) transmission will be switched off from 270130 UTC to 281230 UTC Jan 21 for maintenance. 2. Cancel this MSG 281230 UTC Jan 21</p>
<p>088. India West Coast. Charts IN 21 255 292 INT 7334. RIG move. Sagar Shakti (19-25.22N 071-24.97E) Sagar Jyoti (19-01.68N 072-21.87E). Refer to 049(T) of INTM 02/21. Wide berth requested.</p>
<p>089. India West Coast – off Mumbai. Charts IN 21 255 292 INT 7334. CV DLS 4200 Progressing installation of platform structures at various locations in area bounded by 19-42.47N 070-45.39E, 19-41.28N 072-09.73E, 18-54.89N 072-20.56E, 18-55.08N 071-46.56E, 18-55.74N 071-01.96E, 19-11N 070-50.88E. Wide berth requested. 2. Cancel this MSG 251830 UTC Feb 21.</p>
<p>090. India East Coast – Gulf of Mannar. Charts IN 224 262 INT 7365. Coastal Triumph progressing research in areas bounded by (A) 08-47.35N 078-19.75E, 09-00.55N 078-47.52E, 09-07.2N 079-22.61E, 08-56.66N 079-23.8E, 08-52.1N 078-51.45E, 08-39.92N 078-24.53E (B) 07-45N TO 07-58N and 077-45E TO 078-04E. Wide berth of 02 NM requested. 2. Cancel this MSG 281830 UTC Jan 21.</p>
<p>091. Cancel NAVAREA VIII MSG 083/21 and this MSG.</p>
<p>092. India West Coast. Charts IN 21 210 255 292 INT 7021. RIG move. Sagar Gaurav (19-22.48N 071-21.59E), Vivekanand 2 (20-13.31N 071-54.79E). Refer to 049(T) of INTM 02/21. Wide berth requested.</p>
<p>093. India West Coast. Charts IN 21 210 254 292 INT 7331. RIG move. Discovery 1 (20-21.52N 072-01.44E). Refer to 049(T) of INTM 02/21. Wide berth requested.</p>
<p>094. India West Coast – Azhikod. Charts IN 220 2029 INT 7358. DGPS (10-12N 076-09E) transmission will be off for maintenance.</p>
<p>095. India East Coast – off Balasore. Charts IN 31 351 352 3017 3037 INT 756. Firing by IAF scheduled from 01 to 06 Feb, 08 to 13 Feb, 15 to 20 Feb, 22 to 27 Feb 21 from 0330 to 0730 UTC in danger area bounded by (A) 21-41N 087-44E (B) 20-57N 086-53E (C) 20-56N 086-55E (D) 21-02N 087-13E (E) 20-56N 087-16E (F) 20-47N 087-02E (G) 20-48N 086-56E (H) 20-12N 087-19E (J) 20-00N 087-59E (K) 20-35N 087-40E (L) 21-24N 087-38E. Danger area extending upto coastline joining point A and B. Wide berth from area advised. 2. Cancel this MSG 270830 UTC feb 21.</p>
<p>096. India East Coast – off Balasore. Charts IN 31 301 351 3011 INT 7419. Firing by IAF scheduled from 01 to 06 Feb, 08 to 13 Feb, 15 to 20 Feb, 22 to 27 Feb 21 from 0731 to 1100 UTC in danger area bounded by (A) 20-57N 086-54E (B) 21-41N 087-54E (C) 21-31N 087-42E (D) 21-13N 087-23E. Danger area extending upto coastline joining point A and B. Wide berth from area advised. 2. Cancel this MSG 271200 UTC Feb 21.</p>
<p>097. India West Coast – Kochi. Charts IN 22 220 259 2004 2029 INT 7356. Firing scheduled on (A) 02, 09, 16, 23 Feb 21 from 0900 to 1200 UTC and 1230 to 1430 UTC (B) 05, 12, 19, 26 Feb 21 from 0900 to 1200 UTC in danger area bounded by 09-57.5N 075-59.5E, 09-57.7N 076-14.2E, 09-44N 076-17.5E, 09-42.5N 076-09.5E. Wide berth from area advised. 2. Cancel this MSG 261300 UTC Feb 21.</p>
<p>098. India East Coast – off Gopalpur. Charts IN 31 305 352 353 391 INT 7413. Army air defence firing scheduled from (A) 03 to 05 Feb (B) 10 to 13 Feb (C) 15 to 18 Feb (D) 24 to 27 Feb 21 from 0130 to 0830 UTC and 0930 to 1430 UTC in danger area bounded by (A) 19-14.6N 084-53.7E (B) 19-07.39N 085-35.94E (C) 18-33.61N 084-53.74E and ARC of 41</p>

<p>098. Continued. NM radius joining point B and C. Wide berth from area advised. 2. Cancel this MSG 271530 UTC Feb 21.</p>
<p>099. India West Coast – off Daman. Charts IN 21 209 254 292 INT 7331. Aerial firing by CG aircraft scheduled on 01 Feb 21 from 0230 to 1130 UTC in danger area bounded within 20-26N to 20-40N and 072-27E to 072-40E. Wide berth from area advised. 2. Cancel this MSG 011230 UTC Feb 21.</p>
<p>100. India West Coast – Gopnath. Charts IN 208 254 INT 7331. DGPS (21-12N 072-06E) transmission will be switched off from 300130 UTC to 311230 UTC Jan 21. 2. Cancel this MSG 311230 UTC Jan 21.</p>
<p>101. NAVAREA VIII - warnings in force as on 29 Jan 2021:- 2020 SERIES - 116 329 333 384 385 442 444 480 515 526 593 630 664 690 691 751 753 757 774 783 786 794 2021 SERIES - 003 016 017 021 025 028 030 033 038 047 055 057 058 061 066 067 070 072 073 075 079 080 081 082 086 088 089 092 093 094 095 096 097 098 099 100 (A) NAVAREA VIII warnings less than 42 days promulgated via safety net. (B) Text of NAVAREA VIII warning in force including those which no longer broadcast available in www.hydrobharat.gov.in. 2. Cancel this MSG 051000 UTC Feb 21.</p>
<p>102. India West Coast – off Mumbai. Charts IN 21 211 255 292 INT 7021. DLS 4200 progressing installation activities in area bounded by 18-49.2N 072-09.49E, 18-48.81N 072-28.67E, 18-11.65N 072-27.91E, 18-18.98N 072-08.8E. Wide berth requested. 2. Cancel NAVAREA VIII MSG 089/21 and this MSG 281830 UTC Feb 21.</p>
<p>103. India West Coast – off Mumbai. Charts IN 211 255 2016 INT 7334. RV Akademik Primakov progressing seismic survey in area bounded by 18-59.83N 072-21.2E, 19-03.69N 072-20.83E, 19-29.73N 072-19.95E, 19-29.76N 072-31.7E, 18-59.14N 072-32.08E. Vessel towing 8 streamers of 3.5 NM. Wide berth of 5.5 NM requested. 2. Cancel this MSG 311830 UTC Jan 21.</p>
<p>104. Indian Ocean – Cocos Basin. Charts IN 7071 7707 INT 707. Rocket launch scheduled on 01 Feb 21 from 0800 UTC to 0930 UTC. Danger area bounded by 00-40.26N 091-03.45E, 00-46.13N 090-37.25E, 01-38.7N 090-47.95E, 01-33.25N 091-14.32E. Wide berth from area advised. 2. Cancel this MSG 011030 UTC Feb 21.</p>

SECTION – VI
CORRECTIONS TO SAILING DIRECTIONS (PILOTS)

NIL

SECTION – VII
CORRECTIONS TO LIST OF LIGHTS

No	Name & Location	Position (Lat-Long)	Characteristics	Ht. (mts)	Range (miles)	Structure & Height (mts)	Remarks
D7760.09	- Ahsan Channel. Ldg Lts 032°26'. Front	24 37.98 N 67 06.27 E	Q W	12	11	Black metal pipe with Rear D7761. platform	TE 2020
F0764.9	- Maa Haa Reef. No. 1	04 36.00 N 73 29.95 E	FI Y 6s	5	6	Grey framework tower on concrete base 5	*
F1685.78	- Banyan	01 13.35 N 103 41.58 E	FI(2)W 10s	11	5	Black 8 on black beacon, red band	..
*	--	..	AIS	MMSI No 995631118
F1696.5	- Pulau Anaksambu. Karang Sambu	01 10.53 N 103 53.22 E	FI R 4s	7	5	Red □ on red beacon	..
*	*	*	*	*	*	*	*
F1697.13	- Pulau Sambu	01 09.90 N 103 53.72 E	FI W	White lattice beacon	..
*	*	*	*	*	*	*	*
F1697.14	- Pulau Sambu. Go's Jetty	01 09.32 N 103 54.03 E	FI W	White post	..
*	*	*	*	*	*	*	*
F1697.15	- Pulau Belakangpadang. Jetty. Head	01 09.29 N 103 53.69 E	FI W	White post	..
*	*	*	*	*	*	*	*
F1772.3	Remove from list; deleted						
F1772.31	Remove from list; deleted						
F1807.6	SELAT RIAU. SELAT KIJANG - Pulau Kambat. Karang Koyang	00 49.87 N 104 37.05 E	FI G 3s	13	11	Green beacon	<i>fl 0.5</i>
	#	#	#	#	#	#	#

8.1

SECTION – VIII
CORRECTION TO LIST OF RADIO SIGNALS

INP 31(1), 2019

(Last correction: Edition No. 11 dated 01 Jun 2020)

NIL

INP 31(2), 2019

(Last correction: Edition No.02 dated 16 Jan 2021)

NIL

NP 31(5), 2017

(Last correction: Edition No. 05 dated 01 Mar 2020)

NIL

INP 31(6), 2018

(Last correction: Edition No. 22 dated 16 Nov 2020)

NIL

SECTION – IX

REPORTING OF NAVIGATIONAL DANGERS

Appeal to all Mariners

1. Mariners at sea whilst on passage, or whilst entering / leaving ports / harbours and other waterways, are requested to look out for new or suspected dangers to navigation, changes in aids to navigation, or corrections to published charts and Sailing Directions. Whenever any such changes / dangers are observed, mariners are requested to notify the same to the Chief Hydrographer to the Government of India at the following address: -

National Hydrographic Office
107-A, Rajpur Road,
Dehradun - 248001
(UTTARAKHAND), INDIA
e-mail: - inho@navy.gov.in, msis-inho@navy.gov.in
Fax No.: +91-135- 2748373
WEB: www.hydrobharat.gov.in

Instructions for filling up IH 102

2. Kindly follow the instructions below in order to help the Hydrographic Office (the recipient) to quickly issue NAVAREA warning / Notice to Mariners for the benefit of all other mariners at sea.

Position Reporting

3. Accurate position or knowledge of position error is of great importance. Latitude and Longitude should only be used to specify position details when they have been fixed by GPS or Astronomical Observations. A full description of the method, equipment, time and datum (WGS 84/ Everest/Other) used should be given. When position is defined by sextant angles or bearings (true or magnetic to be specified), more than two bearings should be used in order to provide a redundancy check. Distances observed by Radar should be corrected for index errors. Where position is derived after the event, from other observations and/or Dead Reckoning, the methodology of deriving the position should be included.

4. Paper Charts. A copy/tracing of largest scale chart is the best medium for forwarding details, the alterations and additions being shown thereon in red, but adequate details from the chart must be traced in black ink to enable the amendments to be fitted correctly.

5. ENCs. A Screen shot of largest scale usage band ENC with the alterations and additions being shown thereon in red. If it is to report an issue with the display of an ENC, a screen shot of the affected cell should be sent along with details of the ECDIS make and version in use at the time.

Depth Reporting

6. When soundings are obtained using echo sounders, the echo sounding trace should be duly annotated with date, times, position, depths, etc., and forwarded with the IH102. It is important to state whether the echo sounder is set to register depths below the surface or below the keel; in the latter case the vessel's draught should be given. Time and date should be given in order that corrections for the height of the tide may be made where necessary. The make, name and type of echo sounder should also be given.

7. For modern echo sounders that use electronic 'range gating', care should be taken that the correct range scale and appropriate gate width are in use. Older electro-mechanical echo sounders frequently record signals from echoes received back after one or more rotations of the stylus have been completed. Thus with a set whose maximum range is 500m, an echo recorded at 50m may be from depths of 50m, 550m or even 1050m. Soundings recorded beyond the set's nominal range can usually be recognised by the following:

- (a) the trace being weaker than normal for the depth recorded;
- (b) the trace passing through the transmission line;
- (c) the feathery nature of the trace.

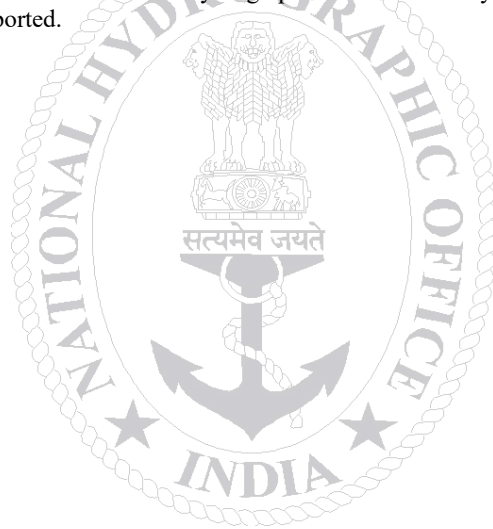
As a check that apparently shoal soundings are not due to echoes received beyond the set's nominal range, soundings should be continued until reasonable agreement with charted soundings is reached. However, soundings received after one or more rotations of the stylus can still be useful and should be submitted if they show significant differences from the charted depths. Efforts should be made to identify and negate false echoes if any. The Mariners Handbook (NP100) and Notice 15 Special Edition of Notice to Mariners may be consulted.

8. Reports which cannot be confirmed or are lacking in certain details should not be withheld. Shortcomings should be stressed and any firm expectation of being able to check the information on a succeeding voyage should be notified.

9. Reports of **shoal soundings**, uncharted dangers and aids to navigation out of order should, at the mariner's discretion, also be made by radio to the nearest coast radio station. The draught of modern tankers in such that any uncharted depth under 30 meters or 15 fathoms may be of sufficient importance to justify a radio message.

10. Changes to Port information should be forwarded on Form IH.102A together with form IH.102. Form 102A contains the information required for Sailing Directions and should be used as an *aide memoir*. The Mariners Handbook, NP100, Chapter 8 gives general instructions. Where there is insufficient space on the forms an additional sheet should be used.

Please Note: - An acknowledgement will be sent by National Hydrographic Office for Hydrographic Notes, on receipt. When a Notice to Mariners is issued, the sender's ship or name is quoted as authority unless the information is also received from other authorities/ foreign Notices to Mariners. Further, communication from National Hydrographic Office to the sender of Hydrographic Notes will only be necessary to verify unusual features or abnormal values reported.



HYDROGRAPHIC NOTE		IH.102 (Revised 2012)	
For Forwarding information for Indian Charts, ENC's and Publications and reporting of ENC related issues			
Date		Ref. Number	
Name of the Ship or Sender			
Address			
Tel/FAX/E-mail address			
Observation Date		Time (UTC/IST)	
Object of Changes Observed (Tick appropriate)	<input type="checkbox"/> Bathymetry	<input type="checkbox"/> Nav. Dangers	<input type="checkbox"/> Nav. aids
	<input type="checkbox"/> Designated Areas	<input type="checkbox"/> Others	
Geographical Position (See Instructions Overleaf)	Latitude		Longitude
Position Method	<input type="checkbox"/> DGPS	<input type="checkbox"/> GPS	<input type="checkbox"/> Radar <input type="checkbox"/> Others
Datum Used	<input type="checkbox"/> WGS84	<input type="checkbox"/> Everest	<input type="checkbox"/> Others
Charts Affected		Edition	
Latest Edition of Indian Notices to Mariners Held			
Tracing/Plot/Photograph if enclosed			
ENCs Affected			
Latest Update Disk Held			
Publication Affected		Edition	
Page No./Light No. etc			
Details:			
Limitations if any in Reporting the Changes Above			
Details of Documents/Photos attached:			
Signature of the Master/Reporter/Observer			

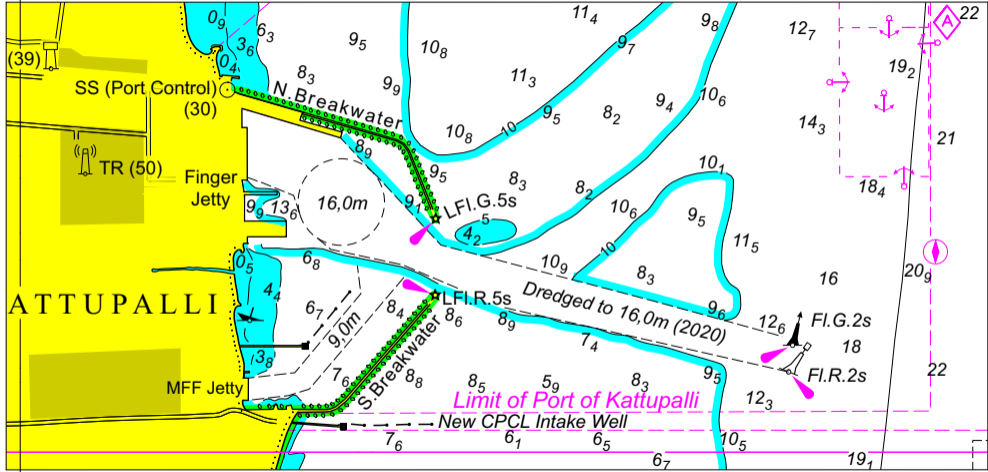
HYDROGRAPHIC NOTE FOR PORT INFORMATION (To accompany Form IH.102)		IH.102A (Revised 2012)	
Date		Ref. No.	
Name of the Ship or Sender			
Address			
Tel/Fax/E-mail			
1. NAME OF PORT			
Location	Latitude		Longitude
2. GENERAL REMARKS			
Principal activities and trade			
Number of ships and tonnage handled per year			
Maximum size of draught of vessel handled			
Copy of Port handbook (if available)			
3. ANCHORAGES			
Type / Purpose			
Minimum depth at anchorage			
Shelter afforded			
Holding ground			
Recommended pilotage to the anchorage			
4. PILOTAGE			
Authority for request			
Embarkation position			
Regulations			
Documents to be provided			
Recommended pilotage to approach of Harbour and Berths			
Information on VTMS			
5. DIRECTIONS			
Entry and Berthing Information			
Tides (Height)			
Tidal Stream Information			
Wind Speed and Direction			
Navigational Aids (Beacons / Buoys / Lights / Etc.)			
6. POLLUTION CONTROL			
Local regulation in force (If Any)			
7. TUGS			
Number available / Tug type			
Maximum HP / Bollard pull			

7. TUGS (Continued)	
Requesting authority	
Availability timing / Communication	
Hiring charges	
8. BERTHING AND WHARVES	
Type & Number of berths available	
Length	
Depth alongside	
Facilities available	
Procedure for requesting berth & hiring charges	
9. CARGO HANDLING	
Containers	
Lighters & Ro-Ro etc.	
10. CRANES	
Brief details of Max. lifting capacity, Height of boom at wharf level and Outreach	
Container handling facilities	
11. BRIDGES	
Vertical clearance	
12. REPAIRS	
Hull machinery and underwater	
Ship and Boat yards	
Docking or Slipway facilities (Size/ Dimensions of vessels handled)	
Hards and Ramps	
Divers / Diving assistance	
13. SERVICES	
Radio / FAX / Telephone / Internet etc.	
Medical	
Quarantine	
Consul	
Ship chandlery and Stevedores	
Compass adjustment	
Tank cleaning	
Hull painting	
Police / Ambulance / Firefighting (Fixed and Mobile facilities)	
Nav. Warning and Weather bulletin	
Garbage disposal / Waste oil disposal	
Helicopter landing facilities	

14. RESCUE & DISTRESS	
Salvage, Lifeboat, Life guards, etc	
15. SUPPLIES	
Fuel (Type, Quantities & Method of delivery)	
Fresh water (Method of delivery and Rate of supply)	
Provisions	
Chart agents	
16. COMMUNICATIONS	
Road, Rail and Air services available	
Nearest airport or airfield	
Port Radio and Information Service (Frequencies and Operating Hours)	
17. PORT AUTHORITY	
Designation, Address, Telephone, E-mail Address and Website	
18. SECURITY	
Security of ports / International Ship and Port Facility Security (ISPS) compliance	
Custom and Immigration Regulations in force	
19. SMALL CRAFT FACILITIES	
Information and facilities for small craft, yachts visiting the port	
Yacht clubs, berths etc	
20. SHORT LEAVE	
21. CLUBS RECREATION	
Information Kiosk (Location)	
Foreign Exchange firms / Banks (Within / Near Port Area)	
Places of interest near port	
22. VIEWS	
Photographs(Duly annotated) of the approaches, leading marks, the entrance to the harbour etc.	
23. ADDITIONAL DETAILS	
Any other information considered to be useful for the mariners	
SIGNATURE OF THE OBSERVER / REPORTER / MASTER	

80°20'E

To accompany Notices to Mariners No.52/21



80°20'E

Block correction For Chart No.3001



FOR 24 X 7 SAR ASSISTANCE IN INDIAN SRR

Email: mrcc-west@indiancoastguard.nic.in

NATION WIDE SAR TELE: 1554 (LAND LINE)

INMARSAT C (IOR) 441907210 CODE: 43 (TOLL FREE)

AFTN: VABBYXYC